

Weather Proof Box - 650WPB / 750WPB Installation Manual

Compatible Models

Rinnai 650 Gas Fire (RDV600ER)

Rinnai 750 Gas Fire (RDV700ER)



This accessory shall be installed in accordance with:

- Manufacturer's Installation Instructions, including RDV650/750 Operation and Installation Manuals supplied with this Gas Space Heater
 - Current AS/NZS 5601 AS/NZS 3000
 - Local Regulations and Municipal Building Codes including local OH&S requirements
- To be installed, maintained and removed by an Authorised Person.

For continued safety of this appliance it must be installed and maintained in accordance with the manufacturer's instructions.



This Weather Proof Box is suitable for use with only with certified RDV flue components supplied for these appliances.

This Weather Proof Box is to be used in conjunction with the Horizontal Flue Terminal Mount Kit, Pt No. R2449.



A sheet of non-combustible material, min 12mm, thick **MUST** be placed between the flue and cladding when installing this Weather Proof Box on buildings clad with weatherboard or other combustible materials. Non-combustible material is **NOT** supplied with this kit. Refer to page 4.

Kit Contents 650/750 WPB (R2448)

Ref	Item	Qty	Ref	Item	Qty
1	Panel Bottom R67 WP Box	1	6	Bracket Support LH R67 WP Box	1
2	Panel Side RH R67 WP Box	1	7	Bracket Support RH R67 WP Box	1
3	Panel Side LH R67 WP Box	1	8	Bracket Support Rear R67 WP Box	1
4	Panel Top R67 WP Box	1	9	Screw 8x10 THPSZ Phil AB Zinc	48
5	Panel Front R67 WP Box	1	10	Screw Wood 8x38 83M88112C	12



An additional 14 fasteners are required to fix the weatherproof box to the outside wall through the pre-punched Ø8mm holes. These fasteners are **NOT** supplied with the kit. The hardware type depends on the type of wall material.

Rinnai Australia Pty Ltd

ABN 74 005 138 769 AU45204

100 Atlantic Drive, Keysborough, Victoria 3173

P.O. Box 460, Braeside, Victoria 3195

Tel: (03) 9271 6625

Fax: (03) 9271 6622

National Help Line

Tel: 1300 555 545* Fax: 1300 555 655*

Hot Water Service Line

Tel: 1800 000 340*

**Cost of a local call may be higher from a mobile phone.*

(National calls from public phones in Australia are free.)

For further information visit www.rinnai.com.au

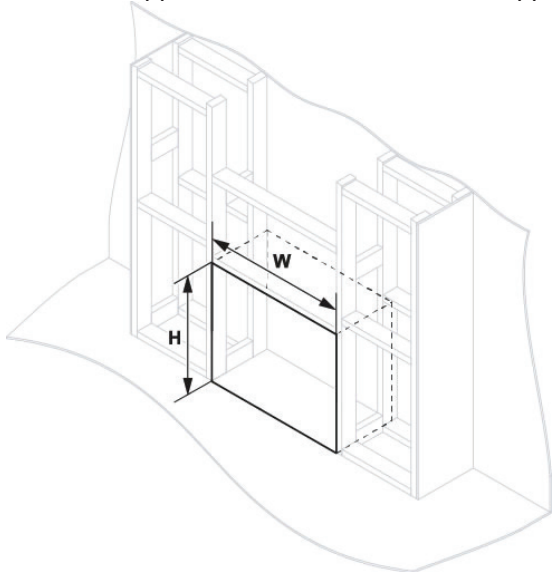
or email enquiry@rinnai.com.au

With our policy of continuous improvement, we reserve the right to change, or discontinue at any time, specifications or designs without notice.

INSTALLATION MANUAL - 650WPB/750WPB

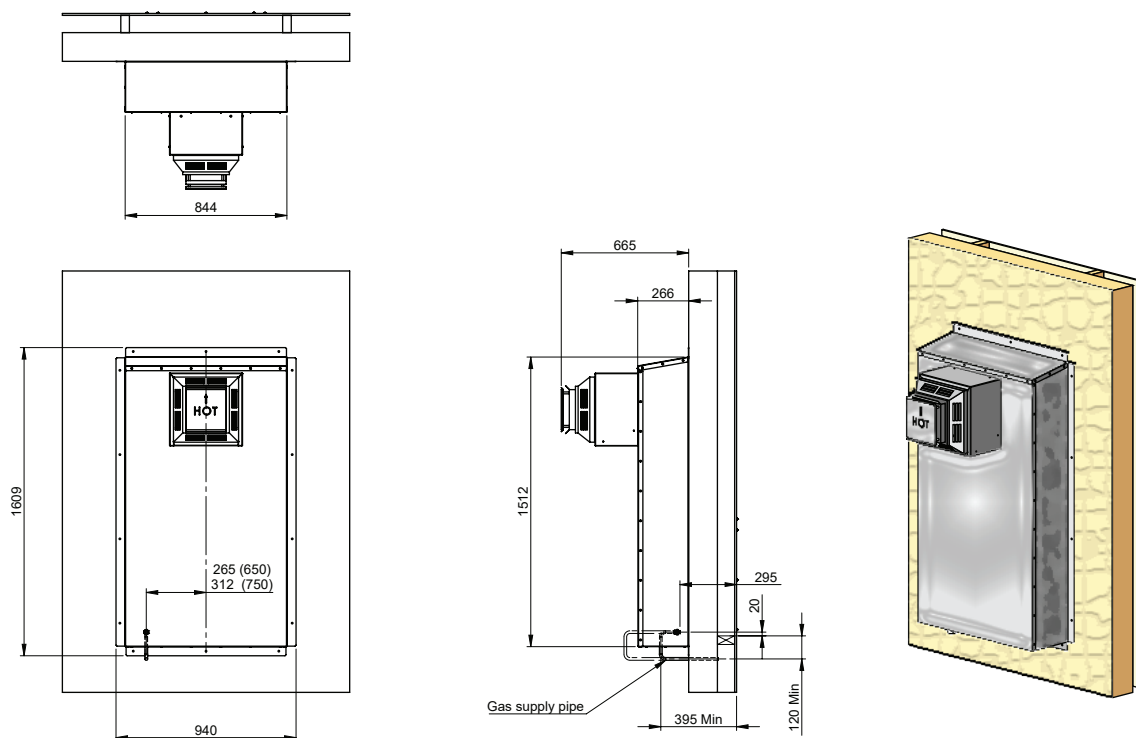
1. PREPARING THE APPLIANCE FRAME

The framing and outside wall must be prepared to the following dimensions. If bricks are to be cut a lintel must be used to support the brickwork above the appliance. The appliance **MUST NOT** be used to support the brickwork.



	Models	
	650	750
W - Width	700 mm	800 mm
H - Height	700 mm	700 mm

DIMENSIONS - (FLUE TERMINAL FITTED)



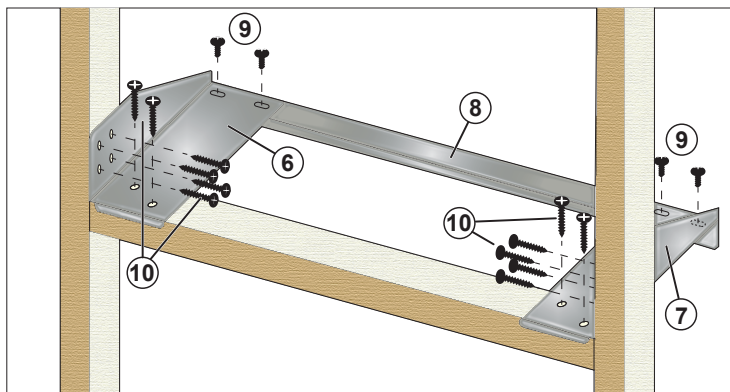
Prepare framing and cavity in accordance with all Local Regulations and Municipal Building Codes including local OH&S requirements. The joists used to support the appliance off the ground **MUST** be capable of supporting a minimum of 105kg.

The box is not designed to support brick work or any other part of the dwelling or structure.

The flue terminal clearances are to be in accordance with Current AS/NZS 5601.

2. FITTING THE APPLIANCE SUPPORT BRACKETS

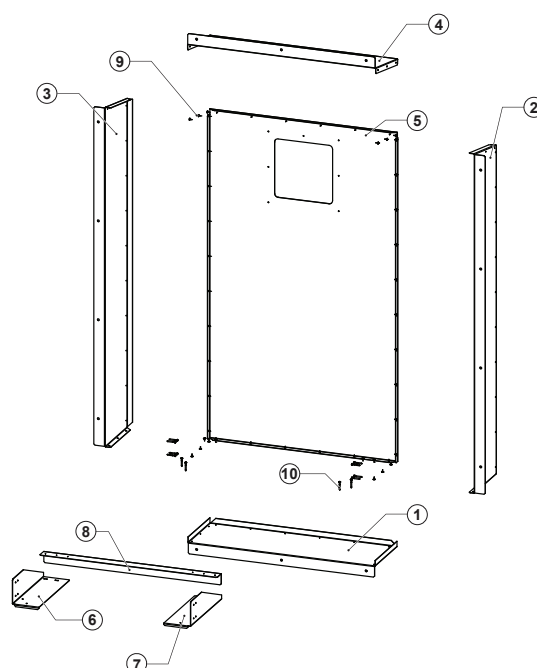
1. Fit the engine support brackets, ⑥ & ⑦ to the framing as shown using the (12 off) 8 x 38 wood screws item ⑩ supplied. The front lip of the brackets must be pushed hard back against the framing or the fascia will not fit correctly.
2. Fit the rear support bracket, ⑧, to the engine support brackets using 8x10 screws supplied, item ⑨.



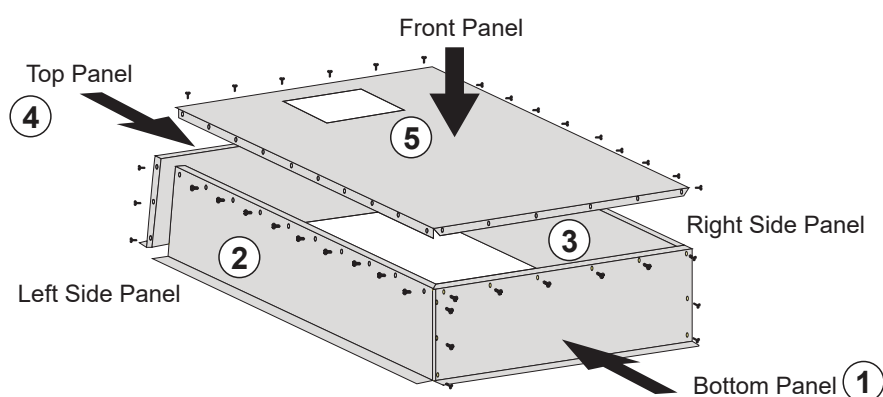
It is essential that the left and right hand brackets are installed square and flush to the frame or the front fascia will not sit correctly flat against the wall.

3. WEATHER PROOF BOX ASSEMBLY

Kit Contents 650/750 WPB (R2448)		
Ref	Item	Qty
1	Panel Bottom R67 WP Box	1
2	Panel Side RH R67 WP Box	1
3	Panel Side LH R67 WP Box	1
4	Panel Top R67 WP Box	1
5	Panel Front R67 WP Box	1
6	Bracket Support LH R67 WP Box	1
7	Bracket Support RH R67 WP Box	1
8	Bracket Support Rear R67 WP Box	1
9	Screw 8x10 THPSZ Phil AB Zinc	48
10	Screw Wood 8x38 83M88112C	12



An additional 14 fasteners are required to fix the weatherproof box to the outside wall through the pre-punched Ø8mm holes. These fasteners are **NOT** supplied with the kit. The hardware type depends on the type of wall material.



1. On a clean, flat surface fit the bottom panel, ① to the side panels, ③ & ②, using the supplied 8x10 screws ⑨. The sloping edge of the side panels are at the top, the bottom panel fits inside the sides.
2. Fit the front panel, ⑤ to the side and bottom panels using the 8x10 screws ⑨.
3. Fit the sloping top panel, ④ using the 8x10 screws ⑨.

4. ATTACHING THE WEATHER PROOF BOX TO THE WALL

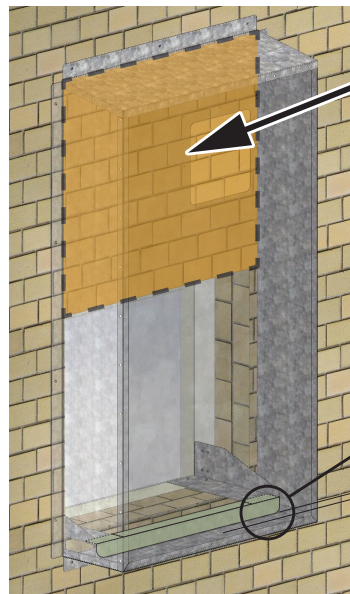


A sheet of non-combustible material, min 12mm, thick **MUST** be placed between the flue and cladding when installing this Weather Proof Box on buildings clad with weatherboard or other combustible materials. Non-combustible material is **NOT** supplied with this kit.

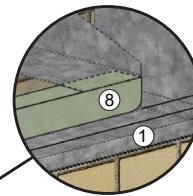


The method of ensuring that the weather seal between the Weatherproof Box and the wall cladding is watertight is the responsibility of the installer. Refer to the current version of AS/NZS 5601. Rinnai is unable to advise as to how this is achieved.

1. Locate the assembled Weatherproof Box to ensure a gap of 5-10mm between the bottom edge of the rear support bracket, ⑧ and bottom panel, ①. This gap is to ensure drainage in the event of accidental water leakage and to allow air movement at the base.
2. Attach the Weatherproof box assembly to the wall using appropriate fasteners and sealant for the type of cladding used. (Sealant material not supplied).



Where combustible cladding is used on the building, a 12mm minimum thickness sheet of non-combustible material must be fixed between the cladding and the exhaust flue to prevent contact.



Leave a 5-10mm gap between bottom panel ① and rear support bracket ⑧



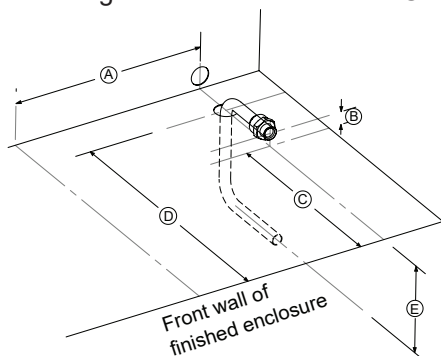
It is the installers responsibility to ensure that the box is appropriately attached and weather sealed to the exterior wall in accordance with all Local Regulations and Municipal Building Codes including local OH&S requirements.



The screws for mounting the flue terminal components are supplied with the flue. The flue terminal clearances are to be in accordance with Current AS/NZS 5601.

4. GAS SUPPLY

As the finished depth of the weatherproof box will vary depending on the wall thickness, the gas supply might not be able to enter through the bottom of the box. Use the diagram below to assist in determining this.



Dimension	650	750
A (from centreline)	265	312
B	18	
C	295	
D	395 Min	
E	120 Min	



Flue Installation instructions are supplied with Horizontal Flue Terminal Mount Kit, Pt No. R2449.