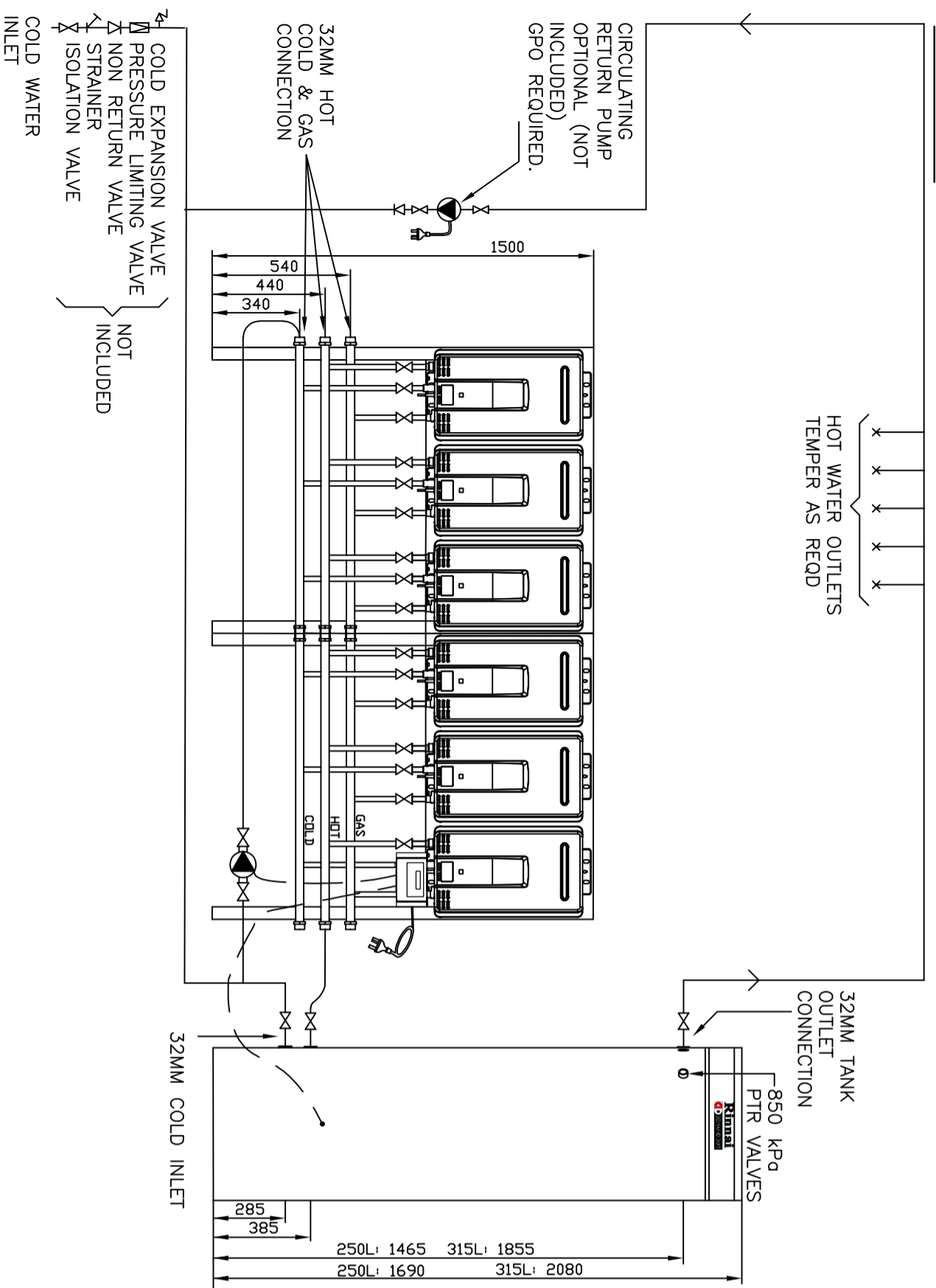


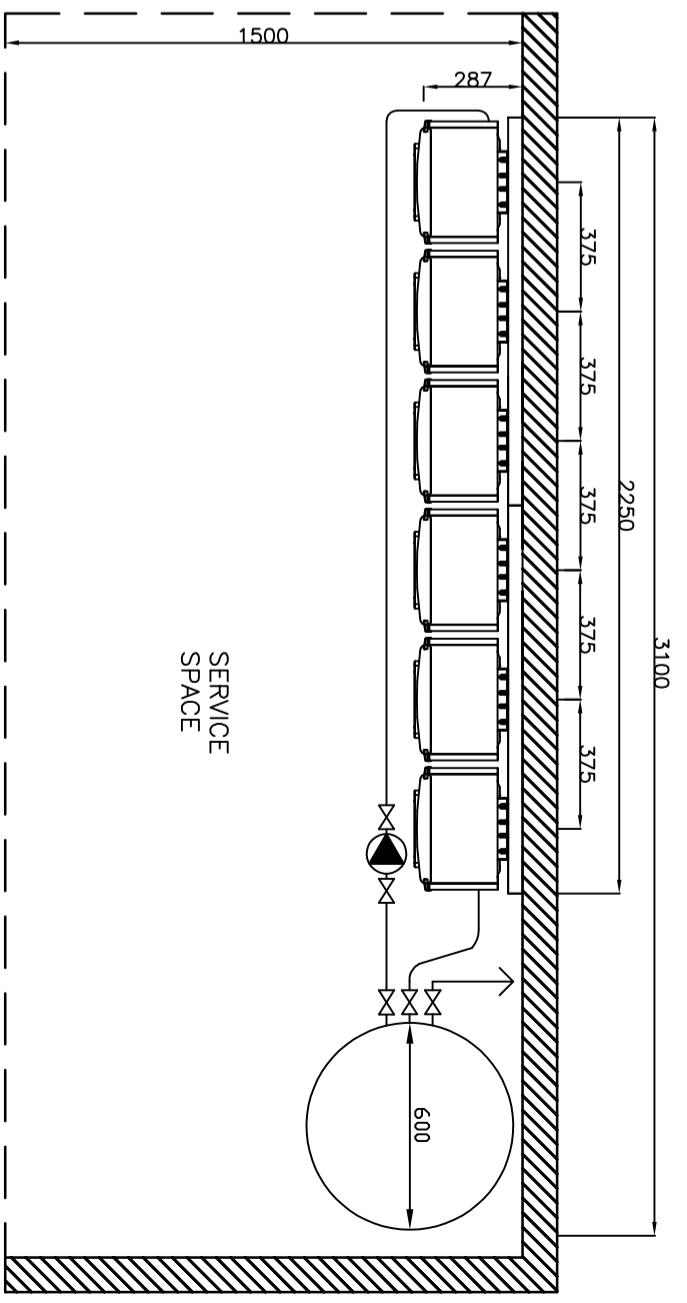
DRAWING CHANGES				BY	CKD	DATE
REV	ECN NO	DESCRIPTION				

ELEVATION VIEW



Specifications		Gas load header NG	
Tank Dry Weight - 250L	80kg	Gas load header LPG	1.13 - 2.75 kpa
Tank Dry Weight - 315L	92kg	System Gas Load	2.75 kpa
Tank Wet Weight - 250L	330kg	Primary Pump	1260 nJ
Tank Wet Weight - 315L	407kg	Power Supply System	1 x Grundfos UPS32100N
System Dry Weight - 250L	240kg	Power Supply Headers	1 x Ext GPO 10amp
System Wet Weight - 250L	490kg	Tank Connections	6 x Ext GPO 10amp
System Dry Weight - 315L	252kg	PTR Valve Rated	32mm
System Wet Weight - 315L	565kg	Thermostat Factory set	1 x 850kpa
Header	HD28 External	Thermostat	65°C
		Various temps & functions via controller	

PLAN VIEW



MATERIAL

TOLERANCE - UNLESS STATED
 0. ±1.0
 0.0 ±0.5

0.00 ±0.1
 Angular ±1'

FINISH:
 DO NOT SCALE DRAWING

DRAWN
RMP

DATE
26/10/21

CHECKED
SVL

APPROVED

Rinnai Australia Pty Ltd

Title
DDF628E-250/315N DEMAND DUO

Weight
SEE NOTES

Drawing Number(PART NO)
SK 0277

Revision
1