

DRAWING CHANGES					
REV	ECON NO	DESCRIPTION	BY	CKD	DATE

TANK WEIGHT:
 DRY WEIGHT: 250L - 60kg
 315L - 72kg
 WET WEIGHT: 250L - 310kg
 315L - 385kg

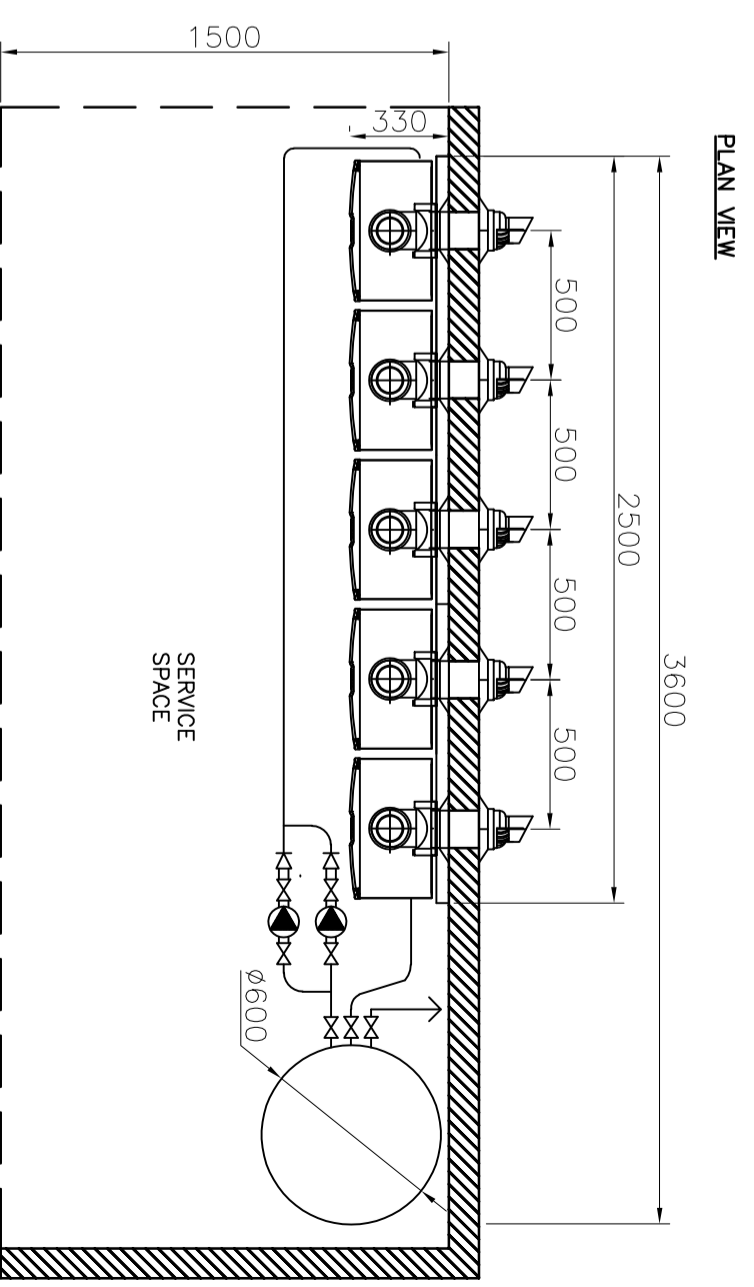
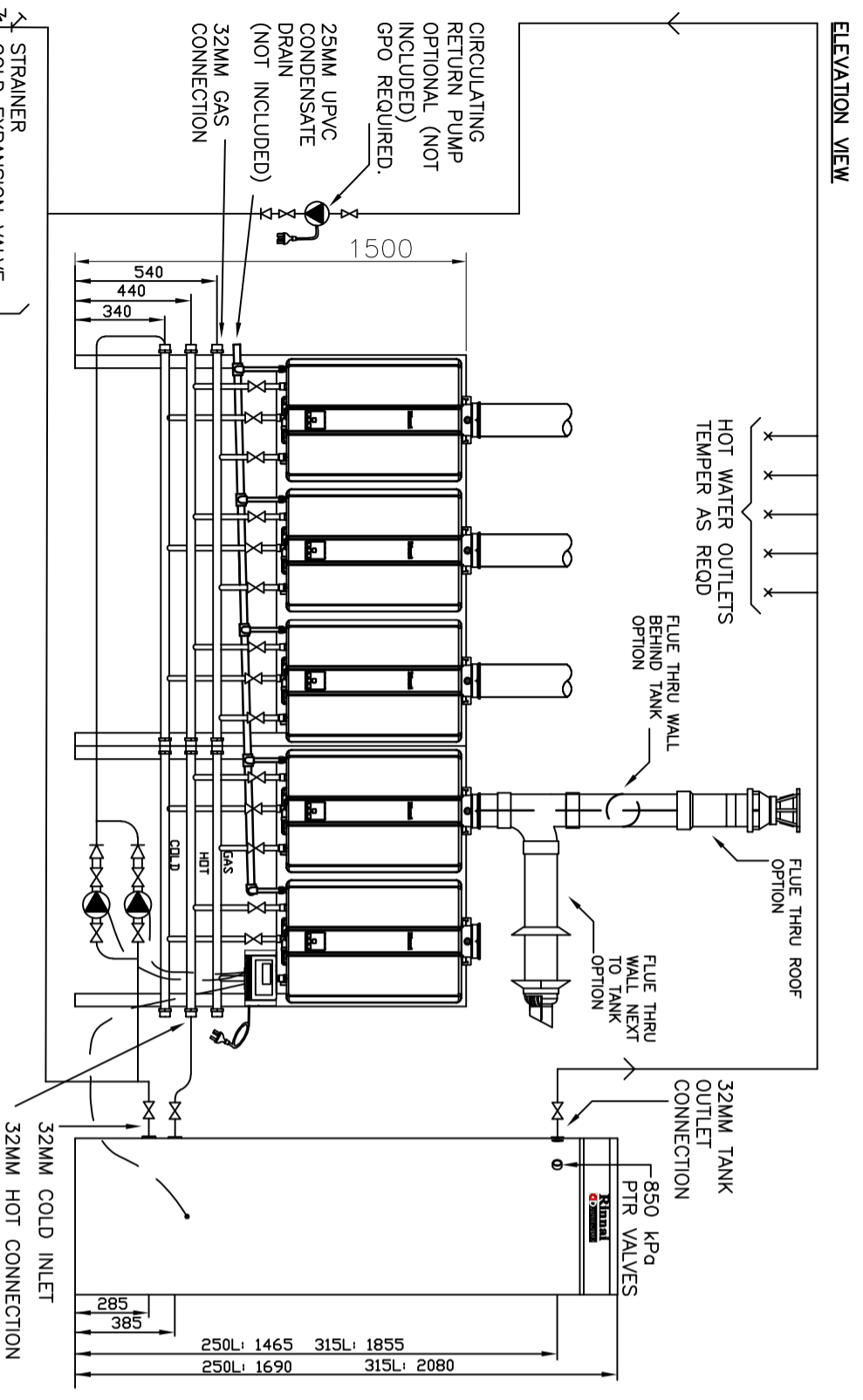
SYSTEM WEIGHT:
 DRY WEIGHT: 250L - 268kg
 315L - 280kg
 WET WEIGHT: 250L - 518kg
 315L - 593kg

PRIMARY PUMP:
 DD5: 2xGRUNDFOS
 UPS32-100N

HD210 HEATERS:
 SYSTEM GAS LOAD: 1045MJ
 -NG 1.13-3.00 KPa
 -LPG 2.75-3.00 KPa

THERMOSTAT:
 FACTORY SET AT 65°
 (HIGHER TEMP AVAILABLE)

GENERAL NOTE:
 CONTROLLER REQUIRES:
 1 X EXTERNAL GPO (10AMP)
 HEATERS REQUIRE:
 1 X EXTERNAL GPO (10AMP)
 PER HEATER
 ** PLEASE NOTE **
 DO NOT RUN CONDENSATE DRAIN
 IN COPPER.
 UPVC PIPE IS RECOMMENDED.



MATERIAL		TOLERANCE - UNLESS STATED		DIMENSIONS ARE IN MILLIMETERS AS 1:100		THIRD ANGLE PROJECTION		DRAWN		RMP		Title	
0. ±1.0		0.00 ±0.1		Angular ±1°		APPROVED		DATE		13/02/20		Rinnai Australia Pty Ltd	
0.0 ±0.5		Angular ±1°		APPROVED		CHECKED		SVL		Title		DDF52101-250/315N	
FINISH:		DO NOT SCALE DRAWING		SEE NOTES		Drawing Number(PART NO)		SK 0166		Revision		1	