

DRAWING CHANGES					
REV	ECON NO	DESCRIPTION	BY	CKD	DATE

TANK WEIGHT:
 DRY WEIGHT: 250L - 60kg
 315L - 72kg
 WET WEIGHT: 250L - 310kg
 315L - 385kg

SYSTEM WEIGHT:
 DRY WEIGHT: 250L - 268kg
 315L - 280kg
 WET WEIGHT: 250L - 518kg
 315L - 593kg

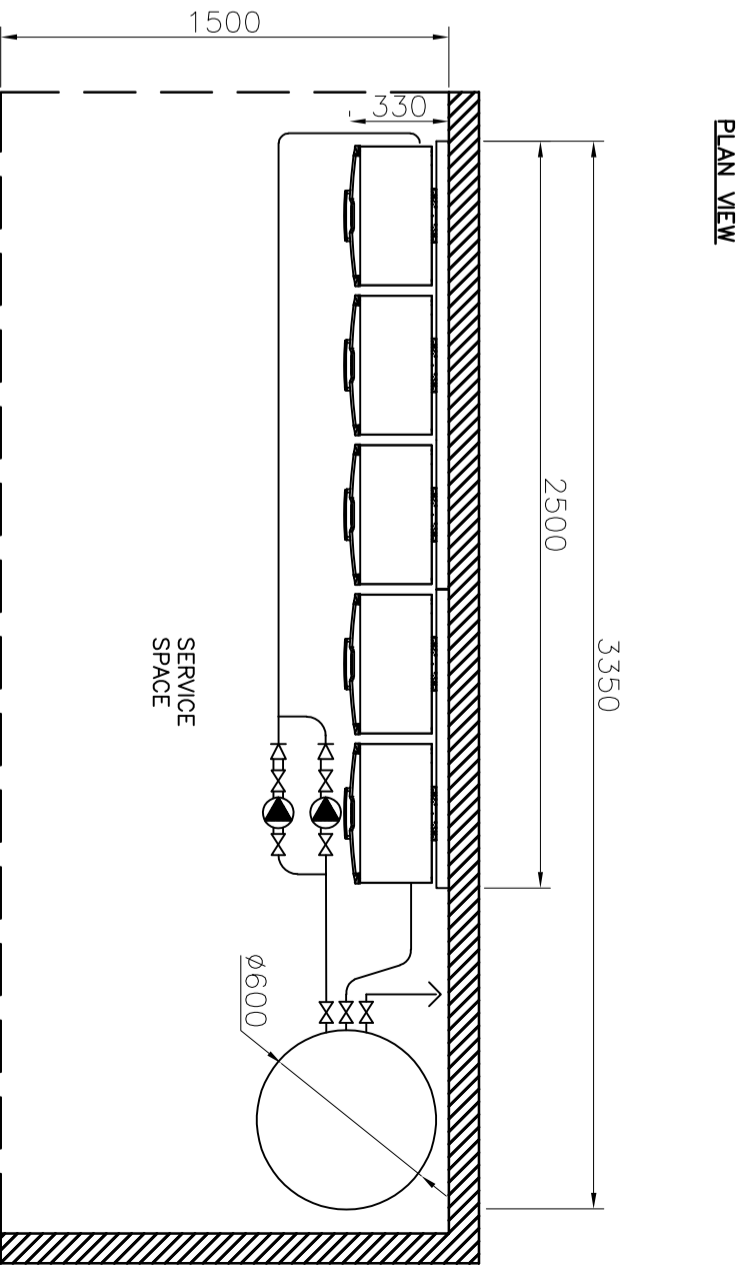
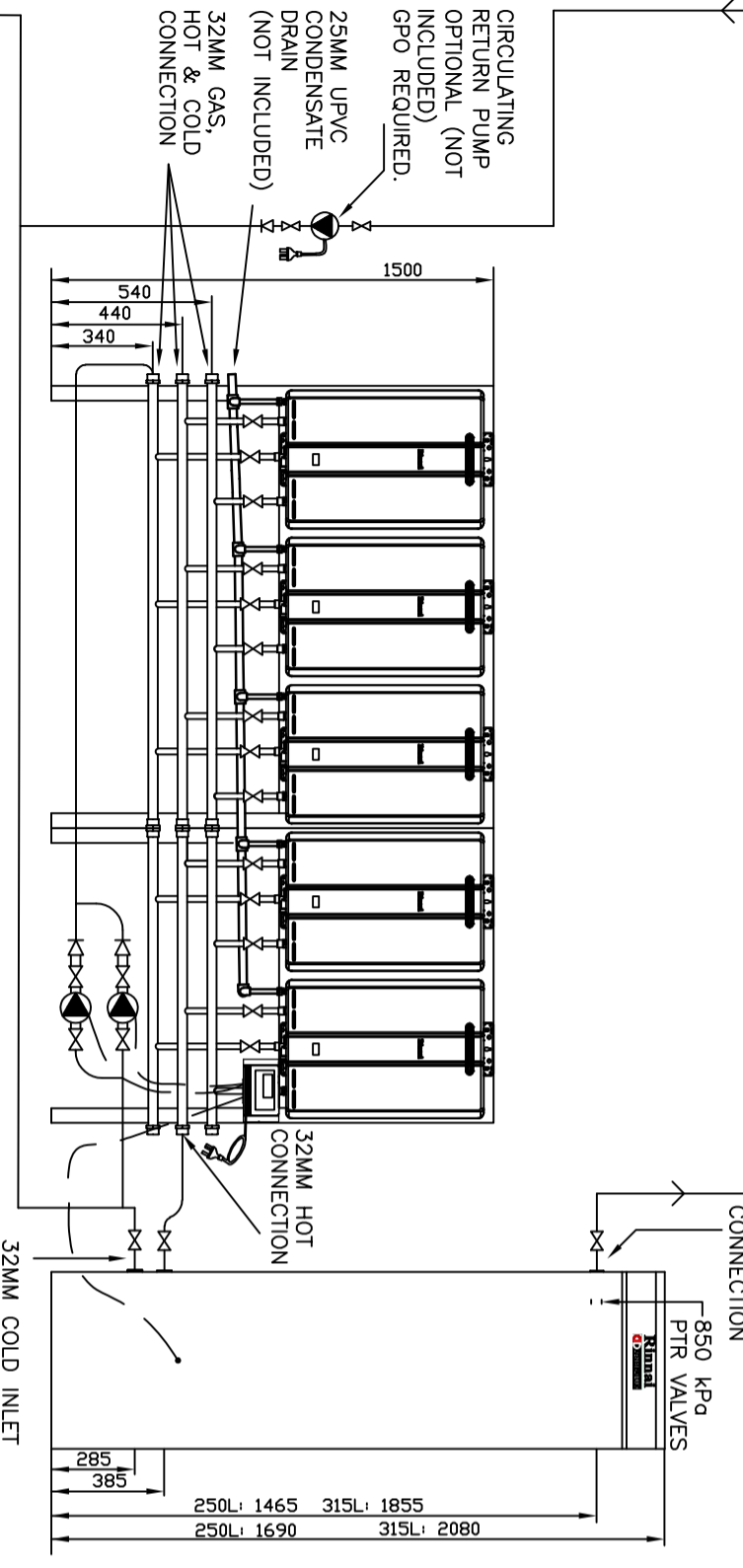
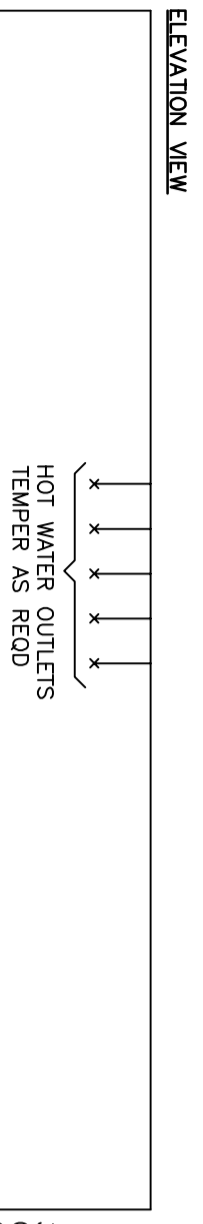
PRIMARY PUMP:
 DD5: 2xGRUNDFOS
 UPS32-100N

HD210 HEATERS:
 SYSTEM GAS LOAD: 1050MJ
 -NG 1.13-3.00 KPa
 -LPG 2.75-3.00 KPa

THERMOSTAT:
 FACTORY SET AT 65°
 (HIGHER TEMP AVAILABLE)

GENERAL NOTE:
 SYSTEM REQUIRES:
 6 X EXTERNAL GPO (10AMP)

**** PLEASE NOTE ****
 DO NOT RUN CONDENSATE DRAIN
 IN COPPER.
 UPVC PIPE IS RECOMMENDED.



- COLD EXPANSION VALVE
 - △ PRESSURE LIMITING VALVE
 - ▽ NON RETURN VALVE
 - STRAINER
 - ⊗ ISOLATION VALVE
 - COLD WATER INLET
- NOT INCLUDED

MATERIAL	TOLERANCE - UNLESS STATED		DRAWN	RMP	Title	Weight	SEE NOTES	Drawing Number(PART NO)	Revision
	0. ±1.0	0.00 ±0.1							
	0.0 ±0.5	Angular ±1°	CHECKED	SVL					
			APPROVED						
DIMENSIONS ARE IN MILLIMETERS AS 1:100			DO NOT SCALE DRAWING						

Rinnai Australia Pty Ltd

DDF5210E-250/315N

SEE NOTES

SK 0160

1