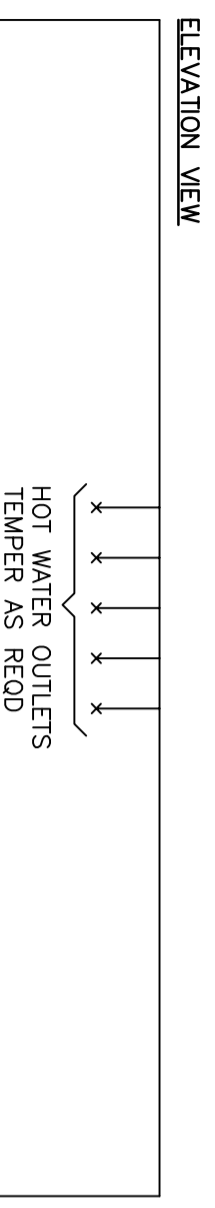
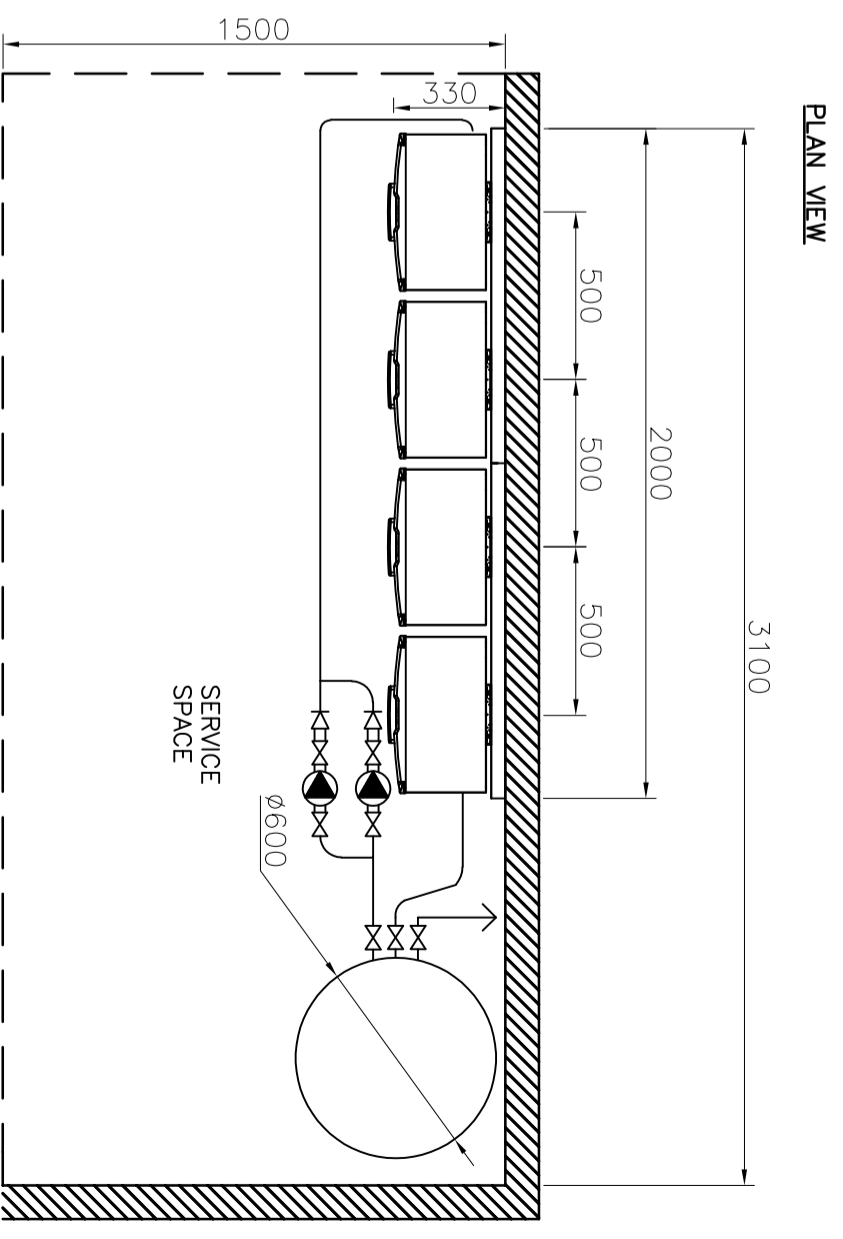


| DRAWING CHANGES | | | | | |
|-----------------|--------|-------------|----|-----|------|
| REV | ECN NO | DESCRIPTION | BY | CKD | DATE |
| | | | | | |



- TANK WEIGHT:**
- DRY WEIGHT: 250L - 60kg
 - 315L - 72kg
 - WET WEIGHT: 250L - 310kg
 - 315L - 385kg
- SYSTEM WEIGHT:**
- DRY WEIGHT: 250L - 228kg
 - 315L - 240kg
 - WET WEIGHT: 250L - 478kg
 - 315L - 553kg
- PRIMARY PUMP:**
- DD4: 2xGRUNDFOS UPS32-100N
 - HD210 HEATERS:
 - SYSTEM GAS LOAD: 836MJ
 - NG 1.13-3.00 KPa
 - LPG 2.75-3.00 KPa
- THERMOSTAT:**
- FACTORY SET AT 65°
 - (HIGHER TEMP AVAILABLE)
- GENERAL NOTE:**
- CONTROLLER REQUIRES:
 - 1 X EXTERNAL GPO (10AMP)
 - HEATERS REQUIRE:
 - 1 X EXTERNAL GPO (10AMP)
 - PER HEATER
 - ** PLEASE NOTE **
 - DO NOT RUN CONDENSATE DRAIN IN COPPER.
 - UPVC PIPE IS RECOMMENDED.



NOT INCLUDED

NOT INCLUDED

| | | | | | | | | | | | |
|--|---------------------------|----------|--|------------------------|-----------|-------------|-------|--------|-----------|-------------------------|----------|
| MATERIAL | TOLERANCE - UNLESS STATED | | DIMENSIONS ARE IN MILLIMETERS AS 1:100 | THIRD ANGLE PROJECTION | DRAWN | RMP | Title | Weight | SEE NOTES | Drawing Number(PART NO) | Revision |
| | 0. ±1.0 | 0.0 ±0.5 | | | 0.00 ±0.1 | Angular ±1° | | | | | |
| <h1 style="text-align: center;">Rinnai Australia Pty Ltd</h1> <h2 style="text-align: center;">DDF4210E-250/315N</h2> | | | | | | | | | | | |
| <p style="text-align: center;">DO NOT SCALE DRAWING</p> | | | | | | | | | | | |