

Rinnai

Operation / Installation Manual Rinnai Demand Duo Systems



All Rinnai Demand Duo (DD) systems and components are Watermark Certified by SAI Global as applicable. The Rinnai DD1 model is certified as a gas storage water heater by the Australian Gas Association (AGA). **AGA CERTIFICATION APPLIES TO DD1 MODELS ONLY. AGA CERTIFICATION DOES NOT APPLY TO OTHER DD MODELS IN THIS MANUAL.**



Important Notice for Installers

Please leave these instructions with the end user after commissioning of the system and alert the end user of the content in the sections “Warnings” and “Periodic Inspection” and “Maintenance”.
Not suitable as a pool or spa heater.



This appliance shall be installed in accordance with:

- Manufacturer’s Installation Instructions
- Current AS/NZS 3000, AS/NZS 3500 & AS/NZS 5601
- Local Regulations and Municipal Building Codes

This appliance must be installed, serviced and removed by an Authorised Person.



The Australian Gas Association
All Rinnai gas products are A.G.A. certified.



N10378

Certified Product



WaterMark
AS3498 Lic W169
SAI Global

Certified Product



WaterMark
AS3498 Lic W208
SAI Global

TABLE OF CONTENTS

IMPORTANT INFORMATION & WARNINGS	1
Safety and Regulatory Information	1
WARNINGS	1
Hydrogen Gas	2
Water Temperature	2
Gas boosted models only	3
Safety Devices	3
Water Quality	3
Regular Care	3
Pressure and Temperature Relief (PTR) valve	3
Expansion Control Valve (ECV) - if fitted	4
Servicing and Repair	4
Insufficient or no hot water	4
Water Heater Valves Discharging Excessively	4
Expansion Control Valve (ECV) - if fitted	5
Service	5
GENERAL INSTALLATION INSTRUCTIONS	6
Regulations	6
Appliance Location	6
HD200e, HD250e, HDC211e (External Models)	6
HD200i, HDC211i (Internal Models)	6
Horizontal Obstructions	7
Horizontal Flue Terminal Clearances (Extract from AS/NZS 5601)	8
Co-Axial Flueing for Internal Models	9
Multiple Flue Terminals	10
Common Flue System for Internal models	11
Installation	11
Assembly	12
DD1 Models, Drawing and Specifications	13
DD2-DD6 Models Drawing and Specifications	19
Cold Water Supply	22
Hot Water Outlet	22
Return Pump	22
Gas Supply	22
Filling Instructions	22
Starting Instructions	22
INSTALLATION HAND OVER MANUAL	23
Demand Duo Principle of Operation	23
Thermostat Operation	23
Demand Duo Preventative Maintenance	23
Tank	24
Primary Pump	24
INFINITY Heat Source	24
INFINITY Fault Codes	25
Ringmain Pump	26
Service	26
CONTACT INFORMATION	29

IMPORTANT INFORMATION & WARNINGS

Safety and Regulatory Information

The Rinnai Demand Duo systems and components are Watermark Certified by SAI Global as applicable.

The Rinnai DD1 model is certified as a gas appliance by the Australian Gas Association (AGA).



AGA Certification covers DD1 models only. AGA Certification does not apply to other DD models covered in this manual.

This appliance must be installed correctly by an authorised person and must conform to location regulations.

The installation must also comply with the instructions supplied by Rinnai. Please keep this instruction booklet in a safe place for future reference.

This appliance is not intended for use by persons (including children) with reduced physical, sensory or mental capabilities, or lack of experience and knowledge, unless they have been given supervision or instruction concerning use of the appliance by a person responsible for their safety.

Any power leads from the water heater system components **MUST BE** plugged into an external weatherproof electrical outlet. If the power supply cord of the system is damaged, it **MUST BE** replaced by an authorised person in order to avoid a hazard, using genuine replacement parts available from Rinnai. Take care of not to touch the power plugs with wet hands.

Notice to Victorian Consumers

This appliance must be installed by a person licensed with the Plumbing Industry Commission.

Only a licensed person will have insurance protecting their workmanship.

So make sure you use a licensed person to install this appliance and ask for your Compliance Certificate.

For Further information contact the Plumbing Industry Commission on 1800 015 129.

WARNINGS

Installation and service only by an authorised person.

- DO NOT operate this appliance before reading the manufacture instructions.
- DO NOT remove covers while power is on.
- DO NOT place articles on or against this appliance.
- DO NOT operate with panels, covers or guards removed from this appliance.
- DO NOT enclose this appliance.
- DO NOT store chemicals or flammable materials near this appliance.

IMPORTANT INFORMATION & WARNINGS

Hydrogen Gas

If the hot water heater is not used for two weeks or more, a quantity of hydrogen gas, which is highly flammable, may accumulate in the water heater. To dissipate this safety, it is recommended that a non-electrically operated hot tap be turned on for several minutes at a sink, or bath, but at dishwasher or other appliance. During this procedure there must be not smoking, open flame or any electrical operating nearby. If hydrogen gas is discharged through the tap, it will probably make a sound like air escaping.

Water Temperature

To meet regulatory requirements the temperature of stored water heater must not be less than 60°C. The thermostat on your storage tank is factory pre-set to 65°C. The outlet temperature setting of the INFINITY is factory pre-set to 75°C.



The Thermostat setting must only be adjusted by an Electrician or other suitably qualified trades person.

The access cover to the control system must only be removed by an Electrician or other suitably qualified trades person.

Scald Hazards



Hot Water can cause scalds.

Children, disabled, and the elderly are at the highest risk of being scalded.

Feel water temperature before bathing or showering.

Scalds from hot water taps can result in severe injuries to young children.

Scalds can occur when children are exposed directly to hot water when they are placed into a bath which is too hot.

DO

- Do stay with children whenever they are in the bathroom (Take the phone off the hook).
- Do take them out of the bathroom if you need to answer the phone or door.
- Do test the temperature of the water with your elbow before placing your child in the bath.
- Do make sure that the tap is turned off tightly.
- Do install a child proof tap cover OR
- Do install a child resistant tap.
- Consider child-resistant taps or tap covers, which prevent a small hand being able to turn on the tap.
- Consider installing tempering valves or thermostatic mixing valves which reduce the hot water temperature delivered to taps. Your local plumbing authority may already require that these be fitted. Contact your installer or local plumbing authority if in doubt.

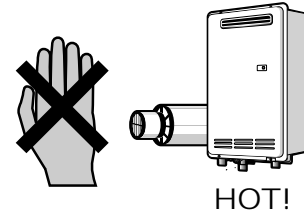
DON'T

- DO NOT leave a toddler in the care of another small child. The older child may not have set the water temperature to a safe level.

IMPORTANT INFORMATION & WARNINGS

Gas boosted models only

- **Do not** touch the flue outlet or do not insert any objects into the flue outlet.
- Keep flammable materials, spray cans, fuel containers, trees, shrubs and pool chemicals etc. well clear of the flue outlet.
- **Do not** use the gas types other than those designated on the data plate. For example, do not use Propane/Butane gas mixtures on appliances marked Propane Gas.
- **Do not** use Propane gas on appliances marked as Natural Gas and vice versa.



Safety Devices

The water heating system is supplied with various safety devices including temperature sensors, overheat sensors and switches and a Pressure & Temperature Relief (PTR) valve. These devices must not be tampered with or removed. The water heating system must not be operated unless each of these devices is fitted and is in good working order.



- **DO NOT tamper with or remove safety devices.**
- **DO NOT operate the water heater unless all safety devices are fitted and in good working order.**
- **DO NOT block or seal the PTR Valve and drain pipe.**

Water Quality

The water quality of most public supplies is suitable for the hot water system. The water quality from bore wells is generally unsuitable for the hot water system. Refer to the 'Warranty Conditions' for water quality parameters and how they affect the warranty conditions. If in doubt about the water quality, have it checked against the parameters listed in the warranty conditions.

If sludge or foreign matter is present in the water supply, a suitable strainer filter should be incorporated in the water supply to the system.

Regular Care

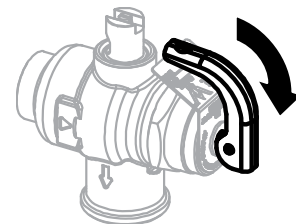
Over flow tray and drain.

The overflow tray and drain (if fitted) should be periodically checked to ensure there are no blockages.

Pressure and Temperature Relief (PTR) valve

This valve is located near the top of the water heater and is essential for safe operation. It is normal for the valve to release a small quantity of water through the drain line during heating.

However, continuous leakage of water from the valve and its drain line may indicate a problem with the water heater.



Lift lever until water flows from drain line
(Lower lever gently!)



Never block the outlet of the PTR valve or its drain line for any reason. The easing gear must be operated at least every 6 months to remove lime deposits and verify that it is not blocked. Failure to do this may result in the water heater failing.

**If the valve does not discharge water when the easing gear lever is opened, or does not seal again when the easing gear is closed, attendance by an authorised person must be arranged without delay.
The PTR valve is not serviceable.**

IMPORTANT INFORMATION & WARNINGS

Expansion Control Valve (ECV) - if fitted

Operate the easing lever on the expansion control valve once every six months. It is very important you raise and lower the lever gently.

Servicing and Repair

Our servicing network personnel are fully trained and equipped to give the best on your Rinnai appliance. If your appliance needs service, ring one of the service contact numbers on the back of this booklet.

The pressure and temperature relief valve and expansion control valve must be checked for performance or replaced by an authorised person at intervals not exceeding 5 years or more frequently in areas where the water is classified as scaling water (see 'Water Quality').

If the electric conduit, power supply cord or plug to hot water system is damaged, they must be replaced by an authorised person in order to avoid a hazard. The power supply cord and plug must be replaced by a genuine replacement part available from Rinnai.

Insufficient or no hot water

Is there electricity supply to the water heater?

- Check to ensure the electric isolating switch(es) at the switchboard (usually marked "Hot water" or "Water heater") is switched 'ON'.
- Check to ensure that the electric fuses for hot water at the switchboard are intact.

Is there insufficient gas supply for gas booster?

- Check gas is available and turned 'ON'.
- Check the isolation valve in the gas line is opened.
- Refer to your plumber to ensure the gas line has been purged of air after installation.

Are you using more hot water than you think?

- Often end users are surprised at the amount of hot water used, especially when showering. If the amount of hot water used during the day exceeds the storage capacity of the hot water system, it is likely that there will be insufficient hot water. Has your plumber install water saving fixture and/or flow control or pressure limiting valves to reduce consumption.

Are hot water system valves discharging excessively?

- Refer to the section "hot water system valves discharging excessively".

High gas bills

- If you think your gas bill is too high, investigate the following:
- You may be using more hot water than you think. This applies especially to showering. Review hot water usage, especially the time taken for showering, and investigate the use of flow control valves or 'water saving' shower roses. Investigate recent changes to hot water usage patterns.
- Water heater valves may be discharging excessively. Refer to the section "hot water system valves discharging excessively".
- There may be hot water leakages in hot water pipes or taps. Have these checked and rectified by a plumber.

If, after investigating the above, you still require assistance contact Rinnai.

Water Heater Valves Discharging Excessively

Pressure & Temperature Relief (PTR) Valve

It is normal and desirable that this valve allows a small quantity of water to be discharged during the heating cycle. If it discharges more than a bucket of water during a 24 hour period or discharges continuously there may be another problem.

If the valve dribbles continuously, try easing the valve gear for a few seconds as described above. This may dislodge any foreign matter and alleviate the problem.

IMPORTANT INFORMATION & WARNINGS

If the valve discharges at high flows, especially at night, it may be as a result of the water pressure exceeding the design pressure of the water heater. Ask your installer to fit a Pressure Limiting Valve (PLV).



- **NEVER** replace the PTR valve with one which has a higher pressure rating than is specified for your water heater.
- If the valve discharges hot water at high flows until the water heater is cold and then stops discharging until the water reheats there may be a serious problem. **Switch off the power supply in the meter box (the switch marked “WATER HEATER” or “HOT WATER”) or the insulating switch installed near the water heater and contact Rinnai.**

Expansion Control Valve (ECV) - if fitted

It is normal and desirable that this valve allows a small quantity of water to be discharged during the heating cycle. If it discharges more than a bucket of water during a 24 hour period or discharges continuously there may be another problem.

If the valve leaks continuously, try easing the valve gear for a few seconds. This may dislodge any foreign matter and alleviate the problem. If this does not alleviate the problem contact Rinnai.

Operate the easing gear regularly to remove any lime deposits and to verify that it is not blocked.

Service

The system should be checked and serviced by an authorised person at least every 5 years.

The PTR valve must be replaced at intervals not exceeding five (5) years.

Rinnai has a service and spare parts network with personnel who are trained and equipped to give the best service on Rinnai appliances.

GENERAL INSTALLATION INSTRUCTIONS

These instructions apply to the Demand Duo range of Rinnai water heaters:

Models Covered

DD1 200 (external or internal) 250 or 315 (litre tank) N or L (Natural gas or LPG)
DD1 250 (external) 250 or 315 (litre tank) N or L (Natural gas or LPG)
DD1C 211 (external or internal) 250 or 315 (litre tank) N or L (Natural gas or LPG)
DD2 200 (external or internal) 250 or 315 (litre tank) N or L (Natural gas or LPG)
DD2C 211 (external or internal) 250 or 315 (litre tank) N or L (Natural gas or LPG)
DD3 200 (external or internal) 250 or 315 (litre tank) N or L (Natural gas or LPG)
DD3C 211 (external or internal) 250 or 315 (litre tank) N or L (Natural gas or LPG)
DD4 200 (external or internal) 250 or 315 (litre tank) N or L (Natural gas or LPG)
DD4C 211 (external or internal) 250 or 315 (litre tank) N or L (Natural gas or LPG)
DD5 200 (external or internal) 250 or 315 (litre tank) N or L (Natural gas or LPG)
DD5C 211 (external or internal) 250 or 315 (litre tank) N or L (Natural gas or LPG)
DD6 200 (external or internal) 250 or 315 (litre tank) N or L (Natural gas or LPG)
DD6C 211 (external or internal) 250 or 315 (litre tank) N or L (Natural gas or LPG)

Regulations

For continued safety of this appliance it must be installed, operated and maintained by authorised person in accordance with manufacture's instructions, current with AS/NZS 3500 and AS/NZS 5601, local regulations and municipal building codes.

Rinnai Demand Duo hot water systems are not suitable or approved as pool heater.

Read these instructions carefully before proceeding with the installation.

Appliance Location

Ensure reasonable access for installation, servicing and removal. All valves, controls and pumps etc must be easily accessible.

Rinnai Demand Duo tanks and any free standing frames must be mounted on a solid level base, capable of supporting the weight of the appliance when full of water. Ensure components are not allowed to stand in water. Spacers under the tank are recommended in wet areas.

All Demand Duo tanks are "left handed" with the water connections to the left when viewing the thermostat housing from the front.

These systems are combined with Rinnai INFINITY HD series, HD200e (VRM-2632WC), HD200i (VRM-2632FFUC), HD250e (VRM-3237WC), HDC211e (KM3237WDC) and HDC211i (KM3237FFUDC).

Rinnai INFINITY and HD units are fan assisted appliances and thus have lower clearances than a natural draft appliance of the same MJ rating.

HD200e, HD250e, HDC211e (External Models)

This appliance is designed for 'Outdoor' Installation only. As such, it must be located in an above ground open air situation with natural ventilation, without stagnant areas, where gas leakage and products of combustion are rapidly dispersed by wind and natural convection.

This appliance must be mounted on a vertical structure with the water and gas connections on the underside pointing downwards. For appliances installed on elevated structures or under floors specific requirements apply. Refer to AS/NZS 5601 Section 6 for details.

This appliance must not be used as a domestic spa or swimming pool heater.

Location of the appliance flue terminal must be in accordance with Section 6 and Figure 6.2 of AS/NZS 5601. Figure 6.2 is reproduced in the 'Horizontal Flue Terminal Clearances' section of these instructions. **Note: that AS/NZS 5601 is current at the time of printing. It is the installers' responsibility to ensure current requirements are met.**

HD200i, HDC211i (Internal Models)

This appliance is designed for 'Indoor' installation only. It may be installed 'Outdoors' in an enclosure if the requirements of AS/NZS 5601 Section 6 are satisfied. An enclosure is defined as a compartment, enclosed are of partitioned off space primarily used for the installing of the appliance.

GENERAL INSTALLATION INSTRUCTIONS

If installed in an enclosure either Internally or Externally, the location should be ventilated to allow gas to dissipate and provision must be made for the safe disposal of any leaking water to a visible location.

This appliance must not be used as a domestic spa or swimming pool heater.

Two types of flue systems are available:

1. The Rinnai Commercial Common Flue System. This system is certified and suitable for use with Rinnai non-condensing internal commercial continuous flow water heaters.
2. The Rinnai Co-Axial FFU flue system. This system is certified and suitable for use with Rinnai condensing and non-condensing internal commercial continuous flow water heaters.

Non-Condensing models are:

REU-V2632FFUC, REU-VM2632FFUC and REU-VRM2632FFUC.

Condensing models are:

REU-KM2635FFUD, REU-KM2635FFUDC, REU-KM3237FFUD and REU-KM3237FFUDC.

The use of non Rinnai flue components may result in a dangerous situation and violates regulations.

The appliance(s) must be located so that the flue terminal exits the building at a suitable point.

For detailed information refer to "FLUEING FOR INTERNAL MODELS" on page 9.

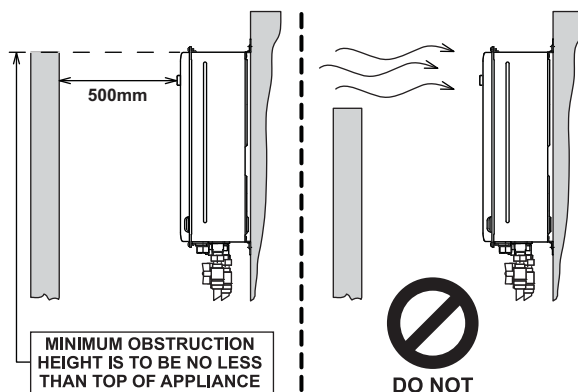
This appliance must be located so that the flue terminal exits the building at a suitable point.

If a horizontal (wall) terminal FFWALLTERM is used, the location must be in accordance with Section 6 and Figure 6.2 of AS/NZS 5601. Figure 6.2 is reproduced under 'HORIZONTAL FLUE TERMINAL CLEARANCES' on page 8 of this manual.

If a vertical (roof) terminal FFROOFCOWL is used, the location must be in accordance with Section 6 of AS/NZS 5601 and the 'FLUEING FOR INTERNAL MODELS' on page 9.

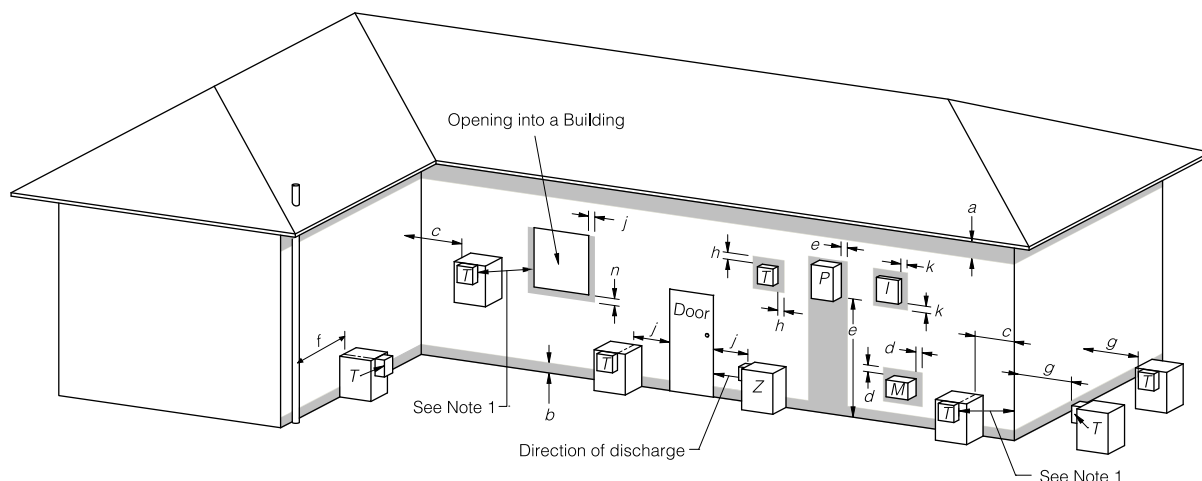
Horizontal Obstructions

AS/NZS 5601-2010 'Gas Installations' stipulates a minimum horizontal clearance of 500 mm between a building structure and obstruction facing the terminal. For Rinnai External continuous flow water heaters such a building structure must 'obstruct' the full front cover height of the appliance, or extend vertically above and below the front cover. There must be no partial obstructions to the front cover of the appliance or any other parts of the appliance casing. This will avoid the appliance failing to operate under windy conditions.



GENERAL INSTALLATION INSTRUCTIONS

Horizontal Flue Terminal Clearances (Extract from AS/NZS 5601)



T = Flue terminal Z = Fan assisted flue appliance only M = Gas meter P = Electricity meter or fuse box I = Mechanical air inlet

■ Shading indicates prohibited areas for flue terminals

Ref.	Item	Min. clearances (mm)	
		Natural draft	Fan assisted
a	Below eaves, balconies and other projections:		
	• Appliances up to 50 MJ/h input	300	200
	• Appliances over 50 MJ/h input	500	300
b	From the ground, above a balcony or other surface *	300	300
c	Front a return wall or external corner *	500	300
d	From a gas meter (M) (see 5.11.5.9 for vent terminal location of regulator) (see Table 6.6 for New Zealand requirements)	1000	1000
e	From an electricity meter or fuse box (P) †	500	500
f	From a drain pipe or soil pipe	150	75
g	Horizontally from any building structure* = or obstruction facing a terminal	500	500
h	From any other flue terminal, cowl, or combustion air intake †	500	300
j	Horizontally from an openable window, door, non-mechanical air inlet, or any other opening into a building with the exception of sub-floor ventilation:		
	• Appliances up to 150 MJ/h input *	500	300
	• Appliances over 150 MJ/h input up to 200 MJ/h input *	1500	300
	• Appliances over 200 MJ/h input up to 250 MJ/h input *	1500	500
	• Appliances over 250 MJ/h input *	1500	1500
	• All fan-assisted flue appliances, in the direction of discharge	-	1500
k	From a mechanical air inlet, including a spa blower	1500	1000
n	Vertically below an openable window, non-mechanical air inlet, or any other opening into a building with the exception of sub-floor ventilation:		
	• Space heaters up to 50 MJ/hr input	150	150
	• Other appliances up to 50 MJ/hr input	500	500
	• Appliances over 50 MJ/h input and up to 150 MJ/h input	1000	1000
	• Appliances over 150 MJ/h input	1500	1500

* - unless appliance is certified for closer installation

† - Prohibited area below electricity meter or fuse box extends to ground level.

NOTES:

- Where dimensions c, j or k cannot be achieved an equivalent horizontal distance measured diagonally from the nearest discharge point of the terminal to the opening may be deemed by the Technical Regulator to comply.
- See Clause 6.9.4 for restrictions on a flue terminal under a covered area.
- See Figure J3 for clearances required from a flue terminal to an LP Gas cylinder. A flue terminal is considered to be a source of ignition.
- For appliances not addressed above acceptance should be obtained from the Technical Regulator.

FIGURE 6.2 (in-part) MINIMUM CLEARANCES REQUIRED FOR BALANCED FLUE TERMINALS, FAN-ASSISTED FLUE TERMINALS, ROOM-SEALED APPLIANCE TERMINALS AND OPENINGS OF OUTDOOR APPLIANCES

GENERAL INSTALLATION INSTRUCTIONS

Co-Axial Flueing for Internal Models

This system is certified and suitable for use with Rinnai non-condensing internal commercial continuous flow water heaters.

The Rinnai INFINITY Flueing system must be installed in accordance with the instructions supplied with the flue terminal. Non Rinnai flueing systems **MUST NOT** be used.

Installations can consist of both horizontal and vertical runs to a maximum of 9 metres with a maximum of three 90° bends.



DD1 & Manifold Pack 3 with Horizontal Flueing



DD6 Internal Flued System



DD6 Direct Wall Flue

The Rinnai internal flueing system is highly versatile and makes installation of an internal water heater simple and convenient.

The flueing for internal water heaters is a Co-Axial design. It is manufactured from an aluminium alloy inner flue pipe to discharge product of combustion and a thermoplastic outer pipe for air supply to the appliance. The water heater is a room sealed appliance.

NOTE: Each Rinnai water heater is flued individually.

As it is fan assisted, the water heater can be flued vertically, horizontally or any combination of both, to a maximum of 9 metres and 3 x 90 degree bends.

Horizontal flueing can be used as a direct wall flue or extended from another internal wall.

Vertical flueing is used when the water heater needs to be flued vertically through the roof.

A condensate trap is required when vertical flue exceeds 1.5 metres.

Rinnai HD internal water heaters are classified as 'room sealed' appliances. Flue systems must be installed in accordance with Rinnai Installation Instructions (supplied with flue terminals), local gas fitting regulations, municipal building codes, AS/NZS 5601 and all other relevant statutory regulations.

The flue terminal clearances in AS/NZS 5601 do not apply to the HD200e, HD250e or HDC211e heaters installed side by side. These appliance are AGA certified to be located side by side, for both internal an external models.

CO-AXIAL INTERNAL FLUEING ORDER CODES

a.	Elbow 90° Bend & Adaptor	FFBEND90BA
b.	Ceiling / Wall Ring	FFWSEAL
c.	External Wall Plate	FFWPLATE
d.	Horizontal Flue Terminal	FFWALLTERM
e.	Universal Bend (2 x 45°)	FFBEND
f.	Flue Pipe 1000 mm length*	FFPIPE1000
g.	Vertical Flue Terminal*	FFROOFCOWL
h.	Condensate Trap	FFCONDK
i.	Vertical Adaptor	FFADPT

* Supplied with pipe clip

Discuss with your Rinnai Commercial representative for further details.

GENERAL INSTALLATION INSTRUCTIONS



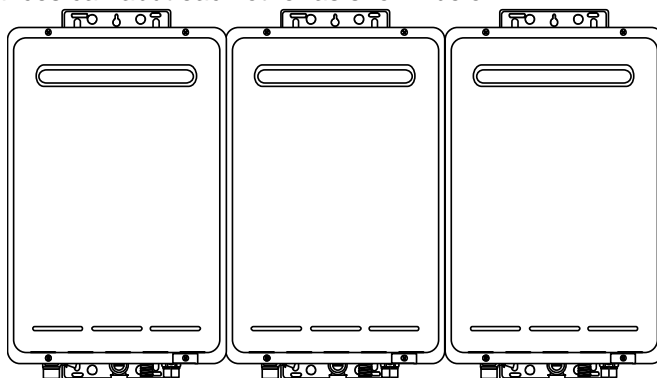
Only Rinnai Flueing systems can be used with Internal Water Heaters. Non-Rinnai Flueing systems are not certified and will not be covered under warranty.

If flue length exceeds 1.5 metres, dip-switch 1 of SW1 located inside the HD unit is to be switched to the 'OFF' position.

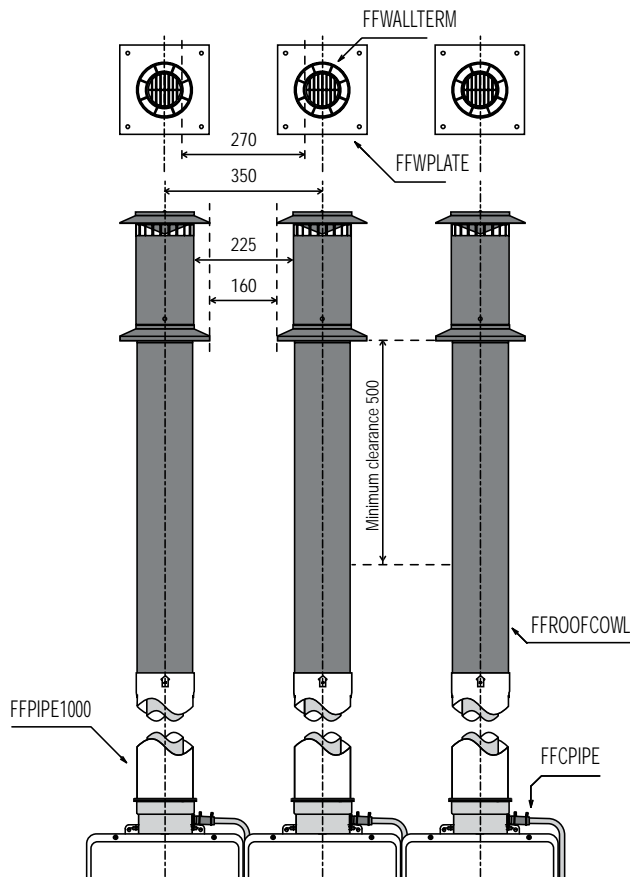
For all further information on Internal Flueing, please refer to separate Flueing manual supplied with Flueing components.

Multiple Flue Terminals

Dimension 'H' in AS/NZS 5601 Figure 6.2 does not apply when multiple Rinnai external water heaters of the same model are installed on the same vertical face with flue terminals at the same height. Under these conditions appliances can abut each other as shown below:



The terminal clearances stated in AS/NZS 5601 do not apply to the INFINITY HD200 and 26 litre internal water heaters when they are installed side by side. AGA certification allows for a minimum horizontal separation of 160 mm for roof terminals and 270 mm for wall terminals.



GENERAL INSTALLATION INSTRUCTIONS



All Rinnai Demand Duo systems with HD200 water heaters have the manifold and flue centres at 375 mm. This is slightly further apart than above and is acceptable.

Common Flue System for Internal models

The Rinnai Commercial Common Flue System is certified and suitable only for use with Rinnai non-condensing internal commercial continuous flow water heaters. It is NOT suitable for use with Rinnai condensing water heaters. Refer suitable model listing below:

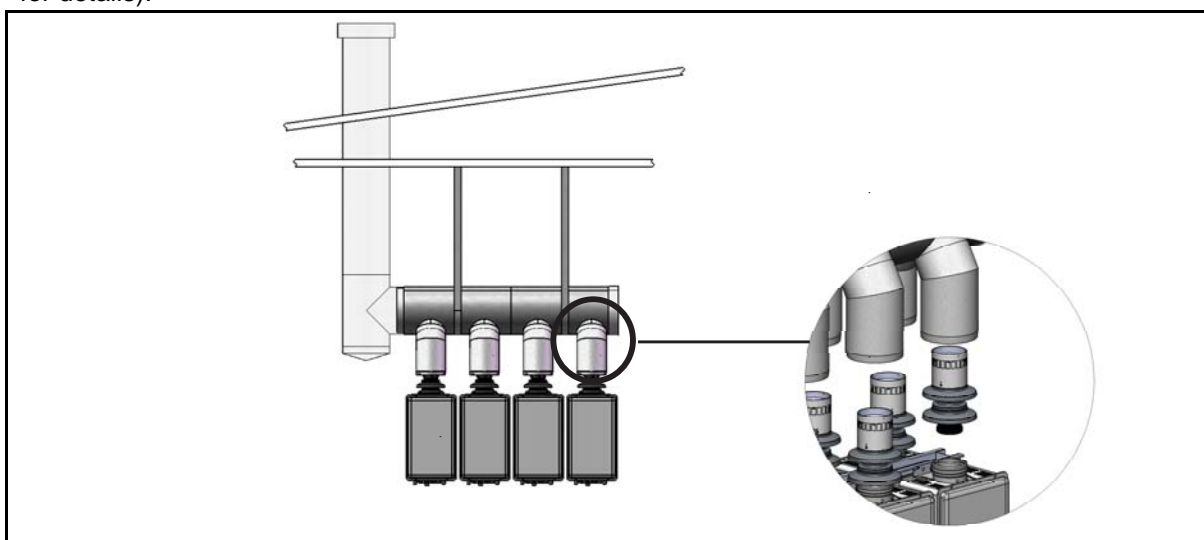
Suitable only for use with the following non-condensing models:

REU-V2632FFUC, REU-VM2632FFUC and REU-VRM2632FFUC.

NOT suitable for use with condensing models:

REU-KM2635FFUD, REU-KM2635FFUDC, REU-KM3237FFUD and REU-KM3237FFUDC.

A Common Flue System can be used. This system utilises adaptors to connect multiple Internal Water Heaters to a Natural Draft Flue. (see the instruction manual supplied with the Rinnai Common Flue for details).



Installation

Unpacking DD1

Remove outer cardboard box. Remove screws attaching feet on tank to wooden pallet. Carefully remove system from pallet and inspect for any transport damage. Ensure that PTR valve and brass plug 32 mm supplied in box is located and stored. **DO NOT** install if any components are damaged.

Unpacking DD2 - DD6

Tank:

Remove outer cardboard box. Remove screws attaching feet on tank to wooden pallet.

Carefully remove tank from pallet and inspect for any transport damage. Ensure that PTR valve, supplied in box is located and stored. **DO NOT** install if any components are damaged.

HD water heaters:

With cardboard box in upright position, remove packing straps and slide lid upwards. Remove water heater from base when required for installation.

Manifold:

Remove manifold, pump and PTR valve(s) and fittings as per bill of materials table below:

GENERAL INSTALLATION INSTRUCTIONS

	PTR VALVE packed with Tank	PTR VALVE packed with manifold	BOILER VALVE packed with manifold	FITTINGS packed with manifold
DD1 200 External/Internal	1 * HT 575	N/A	N/A	N/A
DD1 250 External	2 * HT 575	N/A	N/A	N/A
DD1C 211 External/Internal	2 * HT 575	N/A	N/A	N/A
DD2 200 External/Internal	1 * HT 575	1 * HT 575	N/A	N/A
DD2C 211 External/Internal	1 * HT 575	1 * HT 575	N/A	N/A
DD3 200 External/Internal	1 * HT 575	2 * HT 575	N/A	32mm Tee
DD3C 211 External/Internal	1 * HT 575	2 * HT 575	N/A	32mm Tee
DD4 200 External/Internal	1 * HT 575	N/A	1 * Valve	N/A
DD4C 211 External/Internal	1 * HT 575	N/A	1 * Valve	N/A
DD5 200 External/Internal	1 * HT 575	N/A	1 * Valve	N/A
DD5C 211 External/Internal	1 * HT 575	N/A	1 * Valve	N/A
DD6 200 External/Internal	1 * HT 575	N/A	1 * Valve	N/A
DD6C 211 External/Internal	1 * HT 575	N/A	1 * Valve	N/A

* ALL HT 575 PTR valves are rated at 850 kPa - RA Part No. 11004781

Assembly

Demand Duo 1

- Position tank in desired position.
- Attach PTR valve supplied in box to 20mm port at top of tank. As for the DD1 200e / 200i 250L or 315L, plug off second port with 20mm plug supplied. For DD1 250e/211e/211i 250L or 315L, attach another PTR valve to second port at the top of tank.
- Plug off second cold inlet port at the bottom of the tank with 32 mm plug supplied with tank.
- Run PTR valve drains to suitable discharge position.

Demand Duo 2 - Demand Duo 6

- Position tank in desired position.
- Attach PTR valve supplied in tank box to 20mm port at top of tank.
- Attach second valve to the other 20 mm port at top of tank.
- Attach the third PTR valve on a DD3 to the hot outlet with the 32 mm threaded tee, nipple and 32 mm male/20mm female reducer supplied.
- Run PTR valve drains to suitable discharge position.
- Mark line on wall where top of HD water heaters are to be located.
 - A useful nominal height is 1500mm from floor level. This may change depending on desired position of flue terminal. It may be higher in trafficable areas or to reduce vertical flue length, for example.
- For HD200 heaters on DD2,3, 4, 5 and 6, mark 375 mm centres, allowing sufficient space between tank and the nearest heater for the primary pump(s) and pipework. For HD250e/HDC211e/HDC211i on DD2 - DD6 mark 500mm centres.
- Attach first heater to wall, preferably a centre heater.
- Connect manifold to heater and confirm that marked centres match the manifold.
- Attach rest of heaters to wall and connect manifold. Attach 32mm tee to cold inlet on tank, with union as required. Cold inlet is lowest fitting on the tank, 285 mm from the tank base.

GENERAL INSTALLATION INSTRUCTIONS

- Join inlet of primary pump to tee at cold inlet fitting on tank with 32mm pipe.
- Join outlet of primary pump to inlet of cold (bottom) pipe on manifold.
- Fit cover so that pump is weatherproof. Ensure power cable enters pump from below and that it is not a track for water to enter pump.



When direct flueing through the wall that the water heaters are mounted on, it may be necessary to attach flue to water heater and push it through the wall before attaching the water heater to the wall.

- Remaining port on the tee is the cold water inlet to the system. It is also the ringmain return point.
- Extend 32 mm hot return pipe (centre pipe) from end of manifold to the return fitting on the tank with union as required. This fitting is 385 mm from the tank base.
- System is now ready to be plumbed to the building.



Primary pump and/or primary pipe work may need to be increased for long runs of primary pipe work, or installation with many bends in the pipe work between tank and manifold.

- Plug primary pump(s) into the thermostatic controller mounted on the tank.
- Plug power supply to the thermostatic controller into an available GPO. DO NOT turn 'ON'.
- Plug water heaters on DD2 - DD6 to an available GPO (one per heater is required). DO NOT turn 'ON'.

DD1 Models, Drawing and Specifications

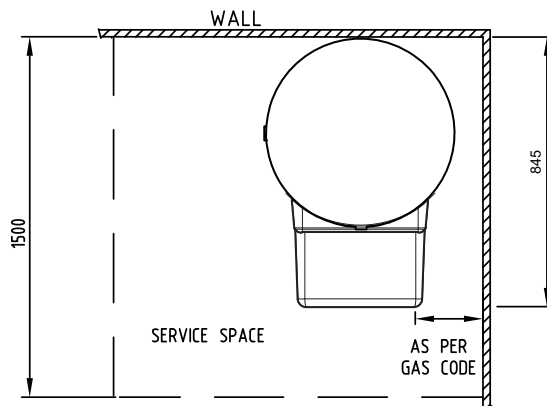
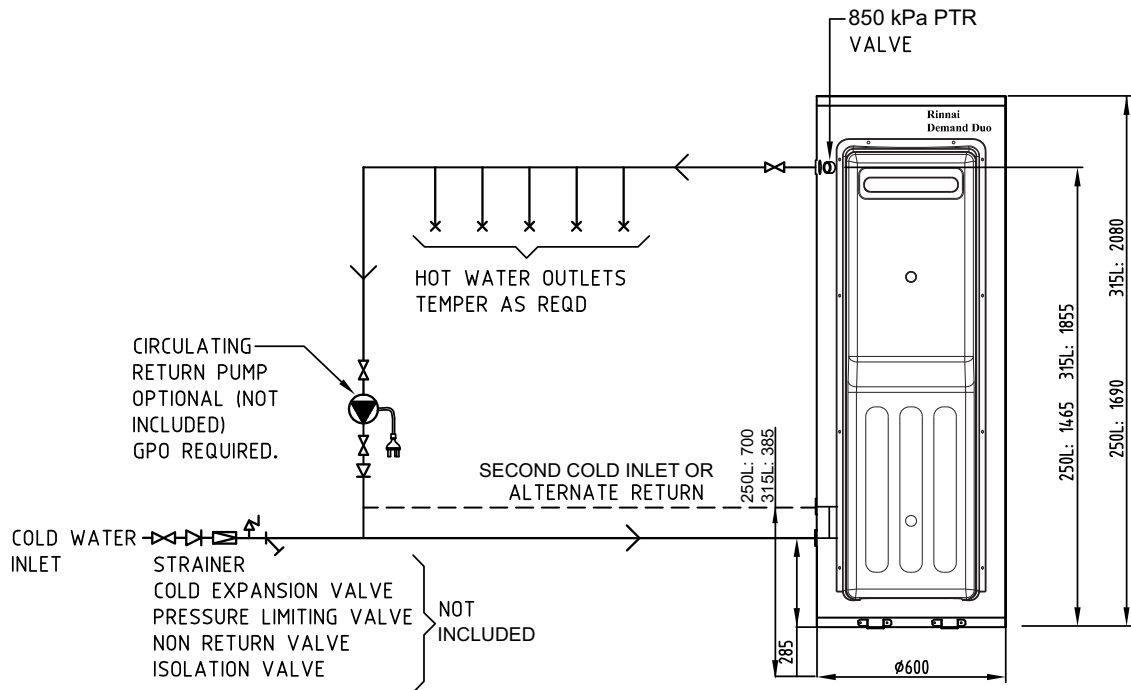
All Dimensions are (mm)								
DD Model	PTR Inclusions	Primary pump	MJ Rating (HD Water Heater)	Total System Weight (kg)	Fittings			
					Hot	Cold	PTR	Gas
*DD1 200e/250 ext	1 * HT 575 (46 kW)	UPS20 - 60B	199	110	RP1 1/4" (32mm)	*RP1 1/4" (32mm)	RP 3/4" (20mm)	RP 3/4" (20mm)
DD1C 211e/250 ext	2 * HT 575 (46 kW)	UPS25 - 80B	211	125	RP1 1/4" (32mm)	*RP1 1/4" (32mm)	RP 3/4" (20mm)	RP 3/4" (20mm)
DD1 200e/315 ext	1 * HT 575 (46 kW)	UPS20 - 60B	199	120	RP1 1/4" (32mm)	RP1 1/4" (32mm)	RP 3/4" (20mm)	RP 3/4" (20mm)
*DD1 200i/250 int	1 * HT 575 (46 kW)	UPS20 - 60B	199	110	RP1 1/4" (32mm)	*RP1 1/4" (32mm)	RP 3/4" (20mm)	RP 3/4" (20mm)
DD1C 211e/315 ext	2 * HT 575 (46 kW)	UPS25 - 80B	211	125	RP1 1/4" (32mm)	*RP1 1/4" (32mm)	RP 3/4" (20mm)	RP 3/4" (20mm)
DD1 200i/315 int	1 * HT 575 (46 kW)	UPS20 - 60B	199	120	RP1 1/4" (32mm)	RP1 1/4" (32mm)	RP 3/4" (20mm)	RP 3/4" (20mm)
DD1C 211i/250 int	2 * HT 575 (46 kW)	UPS25 - 80B	211	125	RP1 1/4" (32mm)	*RP1 1/4" (32mm)	RP 3/4" (20mm)	RP 3/4" (20mm)
*DD1 250e/250 ext	2 * HT 575 (92 kW)	UPS20 - 60B	250	120	RP1 1/4" (32mm)	*RP1 1/4" (32mm)	RP 3/4" (20mm)	RP 3/4" (20mm)
DD1C 211i/250 int	2 * HT 575 (46 kW)	UPS25 - 80B	211	125	RP1 1/4" (32mm)	*RP1 1/4" (32mm)	RP 3/4" (20mm)	RP 3/4" (20mm)
DD1 250e/315 ext	2 * HT 575 (92 kW)	UPS20 - 60B	250	130	RP1 1/4" (32mm)	RP1 1/4" (32mm)	RP 3/4" (20mm)	RP 3/4" (20mm)
*DD 250	1 * HT 575 (46 kW)	N/A	N/A	73	RP1 1/4" (32mm)	*RP1 1/4" (32mm)	RP 3/4" (20mm)	RP 3/4" (20mm)
DD 315	1 * HT 575 (46 kW)	N/A	N/A	88	RP1 1/4" (32mm)	RP1 1/4" (32mm)	RP 3/4" (20mm)	RP 3/4" (20mm)
DD COMBO 250	1 * HT 575 (46 kW)	N/A	N/A	75	RP1 1/4" (32mm)	RP1 1/4" (32mm)	RP 3/4" (20mm)	RP 3/4" (20mm)
DD COMBO 315	1 * HT 575 (46 kW)	N/A	N/A	90	RP1 1/4" (32mm)	RP1 1/4" (32mm)	RP 3/4" (20mm)	RP 3/4" (20mm)



DD1 250L only tank supplied with 32 mm brass plug to plug one of the unused cold inlet ports.

GENERAL INSTALLATION INSTRUCTIONS

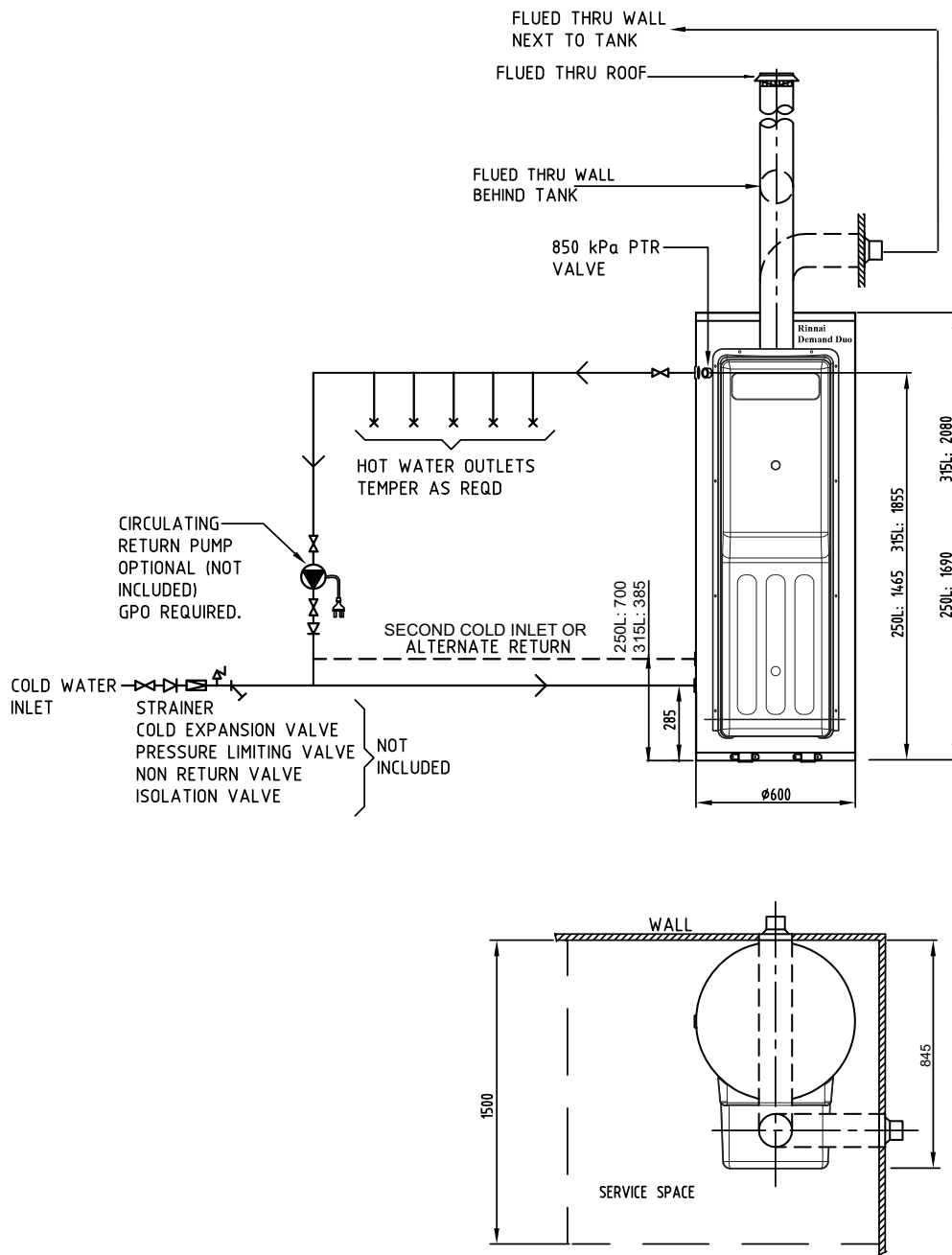
DD1 200e / 250L & 315L



NOTE: PLUG UNUSED COLD INLET PORT WITH BRASS PLUG 32 MM SUPPLIED WITH TANK

GENERAL INSTALLATION INSTRUCTIONS

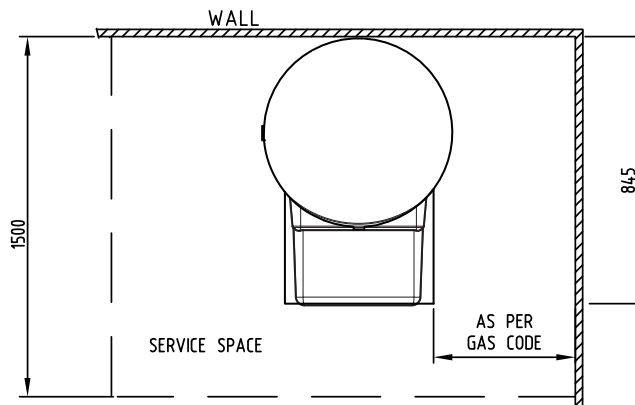
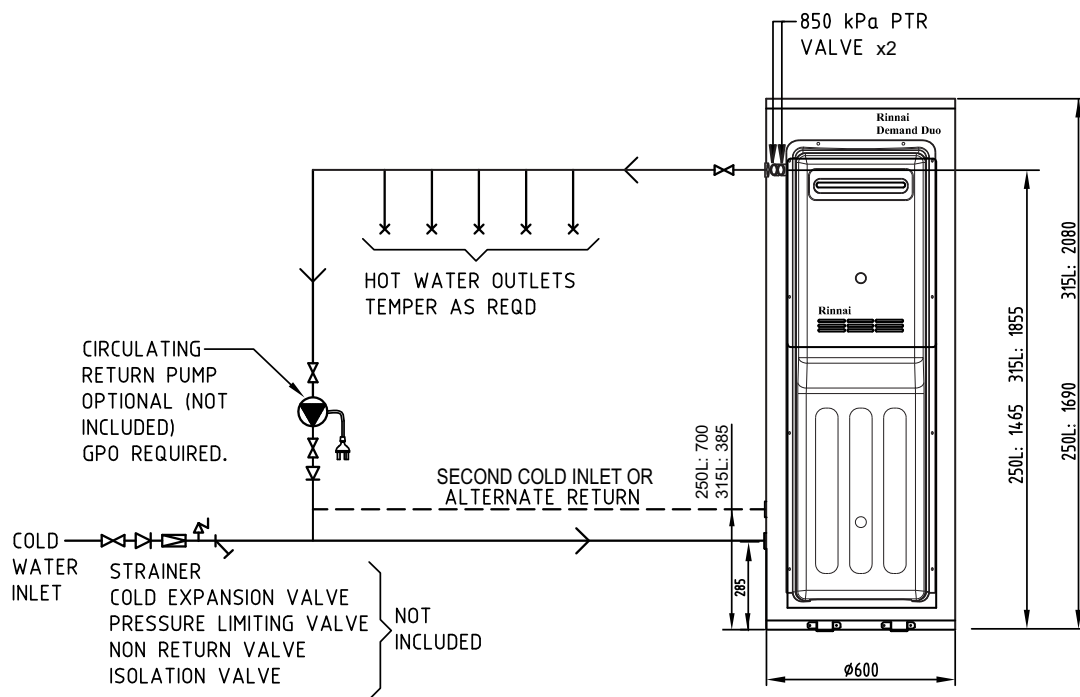
DD1 200i / 250L & 315L



NOTE: PLUG UNUSED COLD INLET PORT WITH BRASS PLUG 32 MM SUPPLIED WITH TANK

GENERAL INSTALLATION INSTRUCTIONS

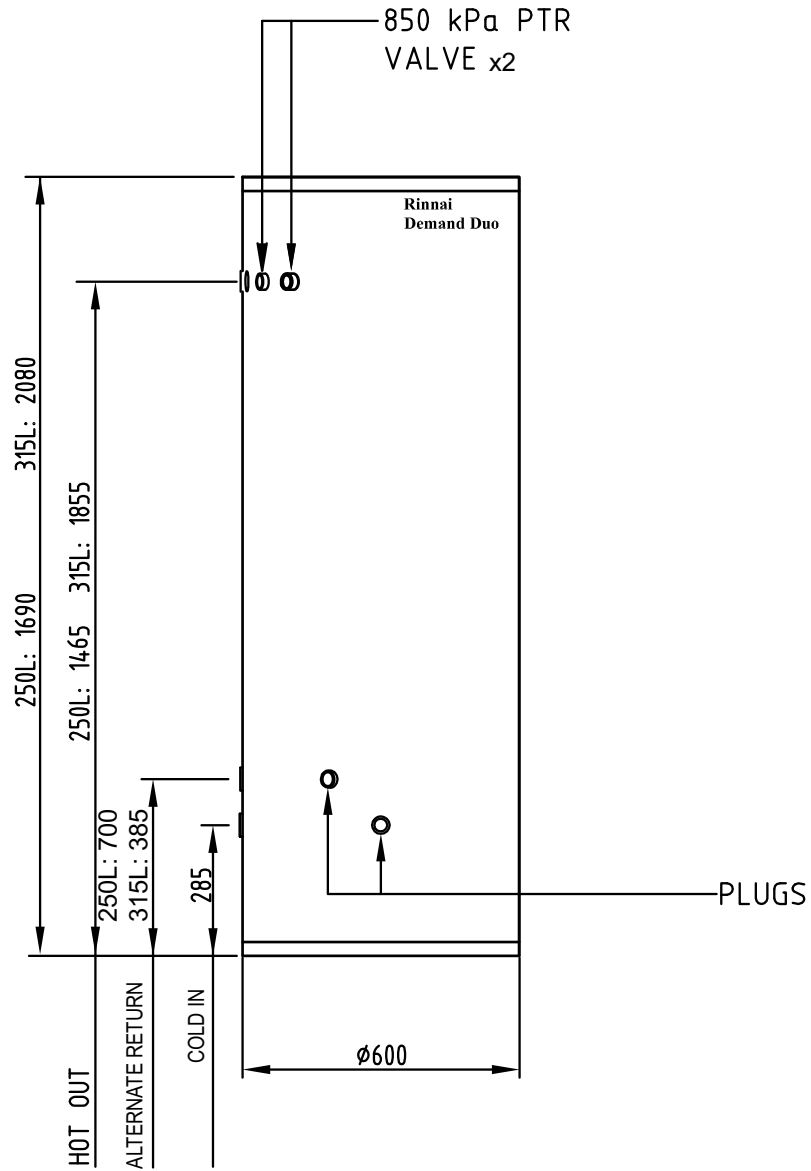
DD1 250e / 250L & 315L



NOTE: PLUG UNUSED COLD INLET PORT WITH BRASS PLUG 32 MM SUPPLIED WITH TANK

GENERAL INSTALLATION INSTRUCTIONS

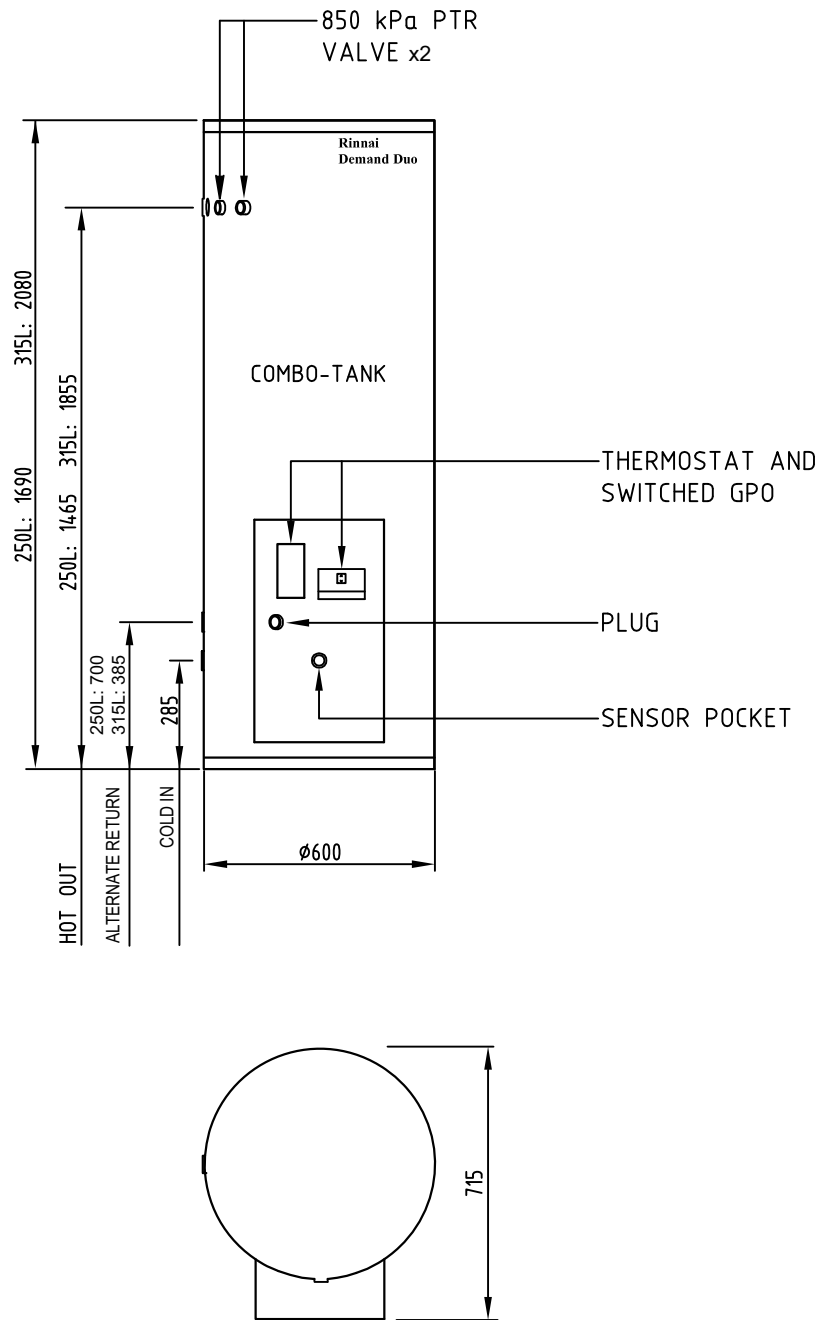
DD 250L & 315L



NOTE: PLUG UNUSED COLD INLET PORT WITH BRASS PLUG 32 MM SUPPLIED WITH TANK

GENERAL INSTALLATION INSTRUCTIONS

DD COMBO 250L & 315L



NOTE: PLUG UNUSED COLD INLET PORT WITH BRASS PLUG 32 MM SUPPLIED WITH TANK

GENERAL INSTALLATION INSTRUCTIONS

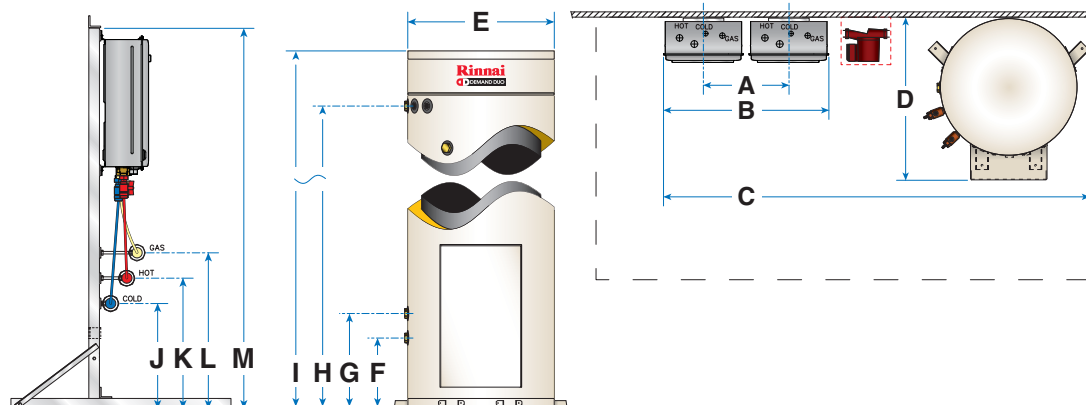
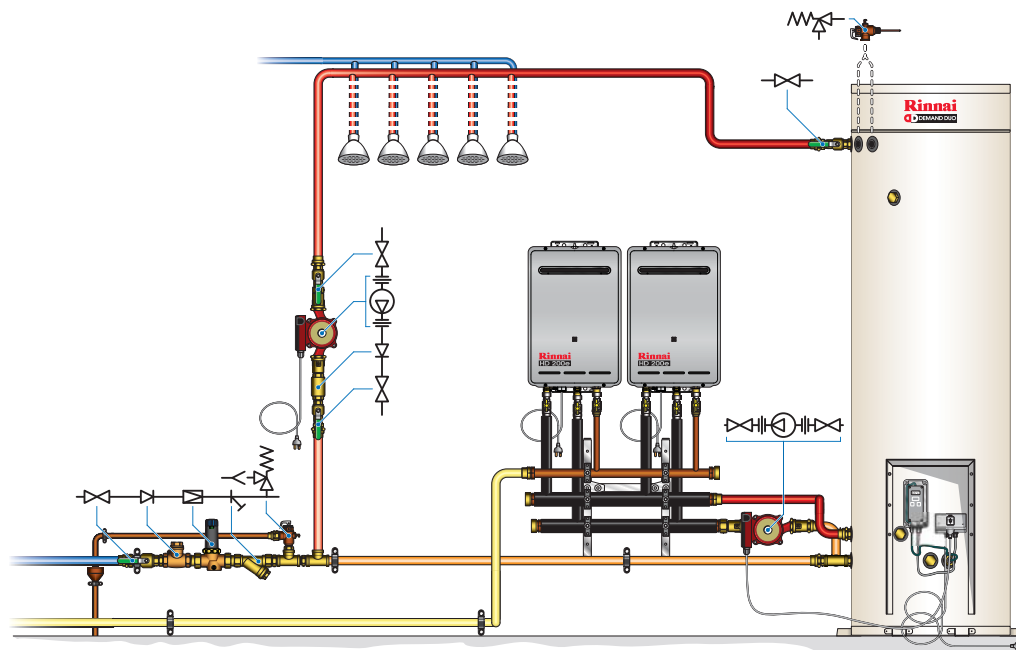
DD2-DD6 Models Drawing and Specifications

All dimensions are (mm)

DD Model	A	B	C	D	E	PTR Inclusions	Primary pump	MJ Rating Gas Boost (HD200's)	Total System Weight (315L)
DD2 200 Ext./Int.	375	725	1825	715	600	2 * HT575 (92 kW)	UPS25-80B	398	115
DD3 200 Ext./Int.	375	1100	2200	715	600	3 * HT575 (138 kW) + Tee	UPS25-80B	597	135
DD4 200 Ext./Int.	375	1475	2575	715	600	1 * HT575 + 1 * Boiler Valve (362 kW)	UPS25-80B	796	155
DD5 200 Ext./Int.	375	1850	2950	715	600		2 * UPS25-80B	995	175
DD6 200 Ext./Int.	375	2225	3325	715	600		2 * UPS25-80B	1194	190

Tank Model	F	G	H	I	Dry Weight	Wet Weight
250 Litre	285	385	1475	1690	60 kg	310 kg
315 Litre			1855	2080	72 kg	385 kg

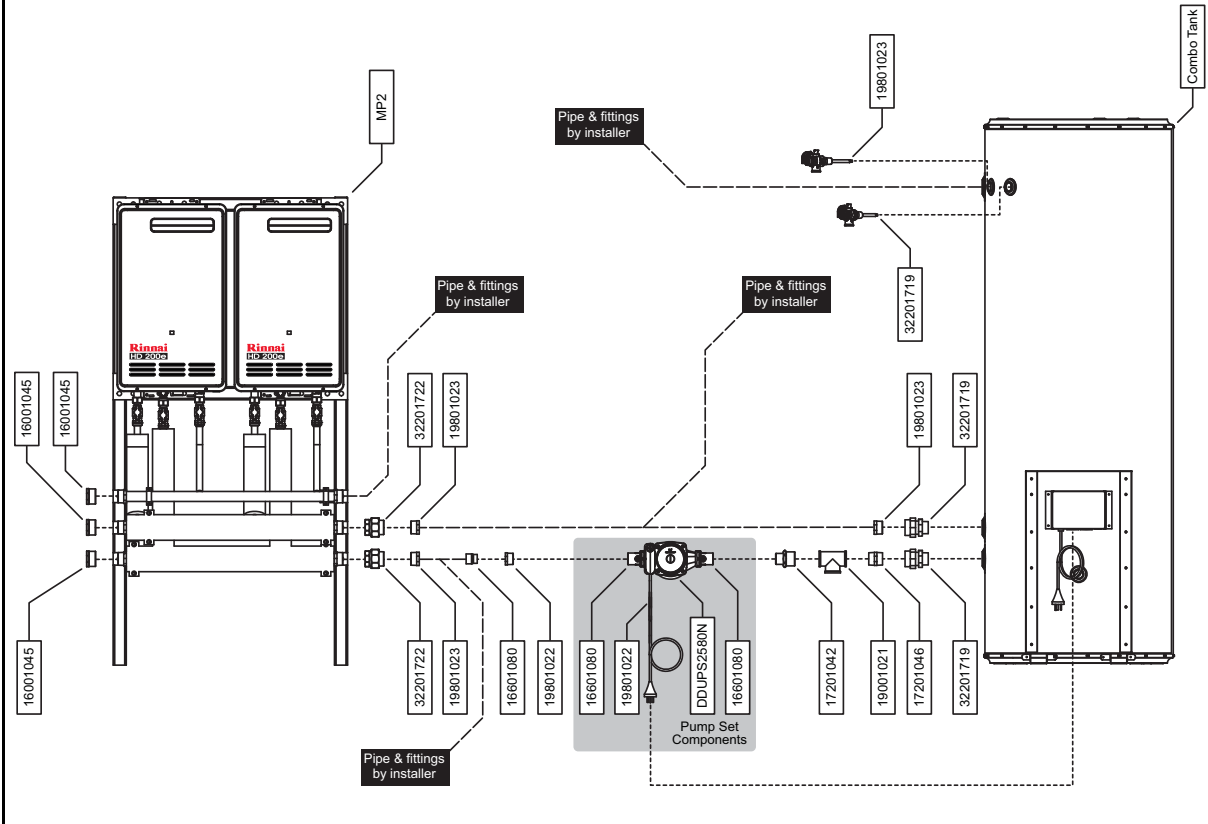
HD Model	J	K	L	M
HD200e	410	510	610	1500
HD200i	340	440	540	



GENERAL INSTALLATION INSTRUCTIONS

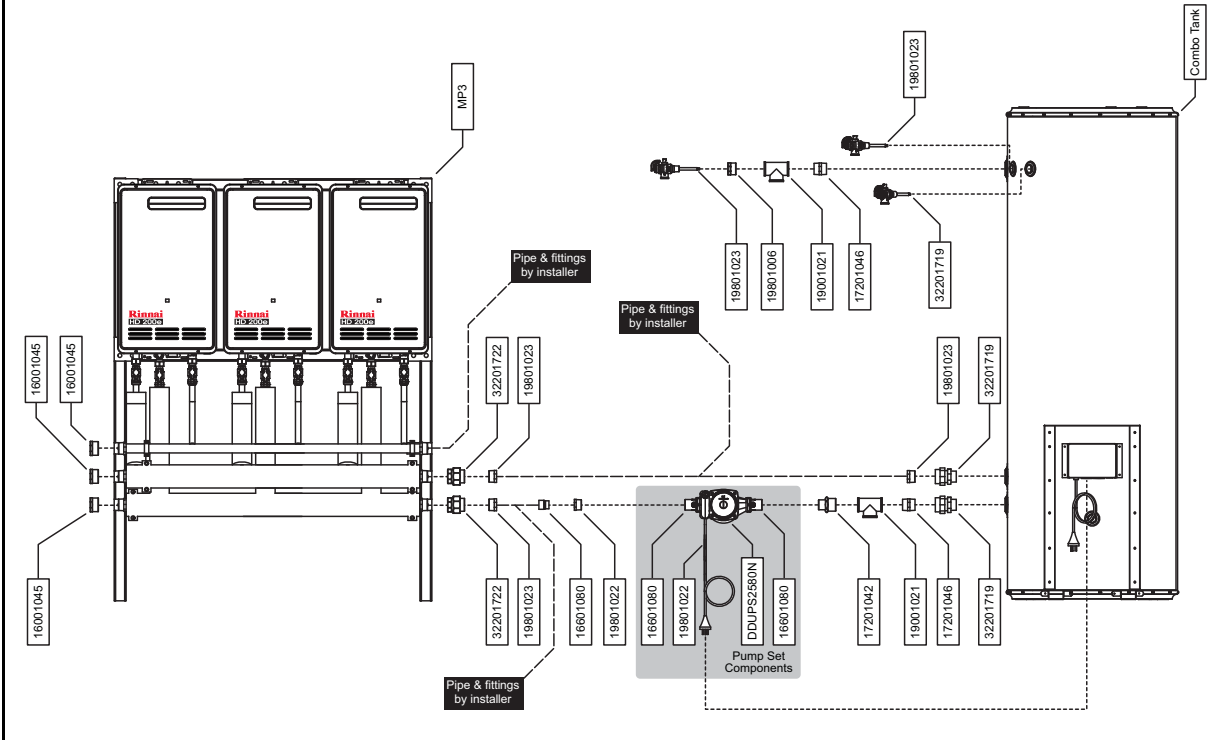
Typical Rinnai Demand Duo DD2 system installation

DD2 KIT Exploded Assembly Diagram



Typical Rinnai Demand Duo DD3 system installation

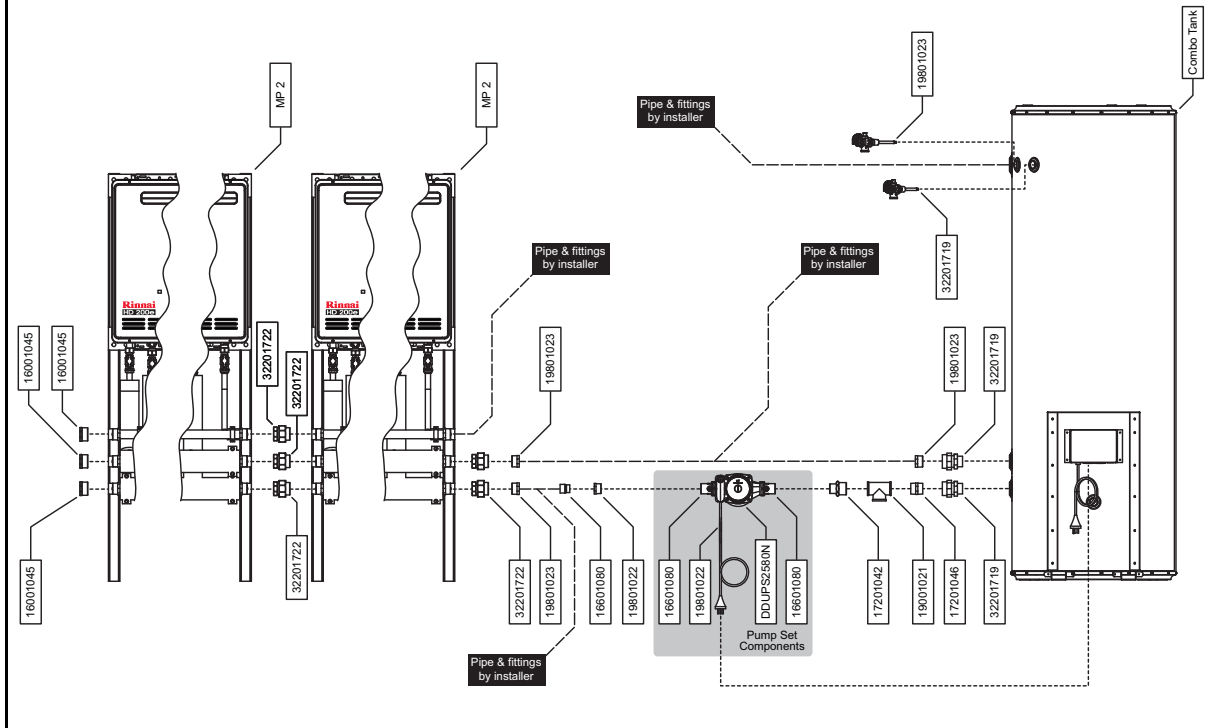
DD3 KIT Exploded Assembly Diagram



GENERAL INSTALLATION INSTRUCTIONS

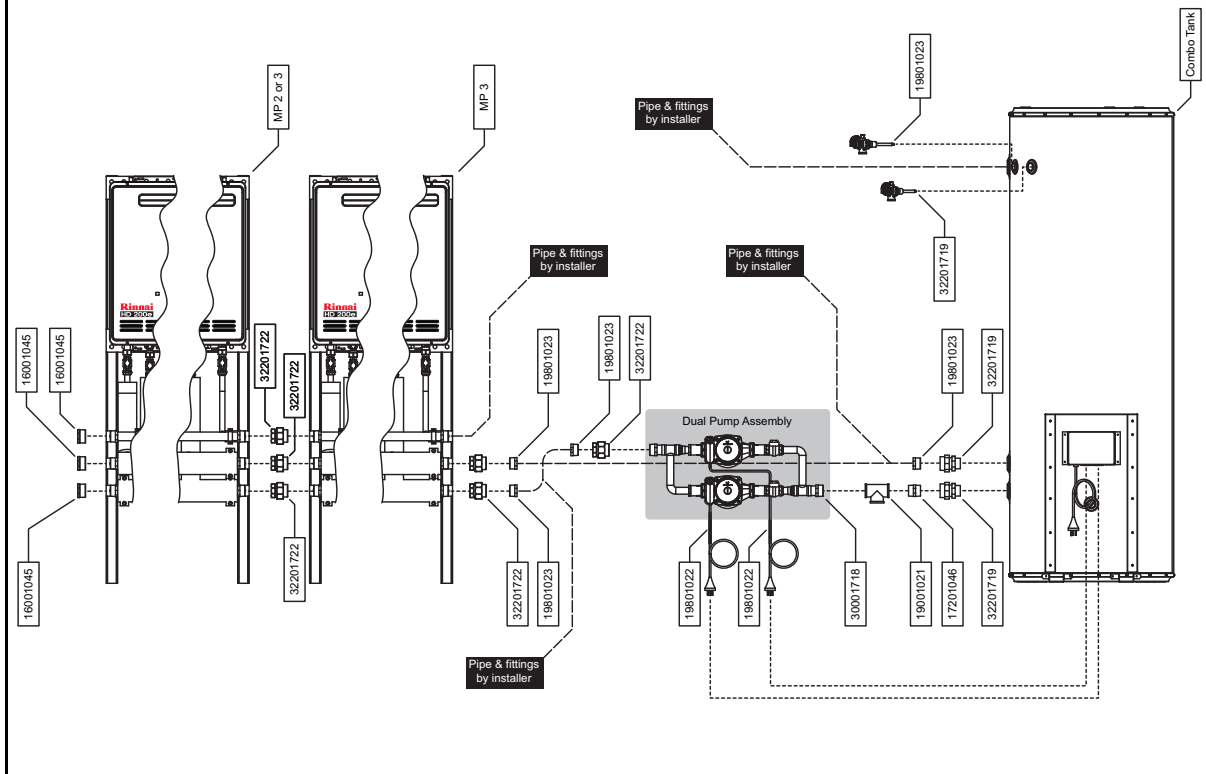
Typical Rinnai Demand Duo DD4 system installation

DD4 KIT Exploded Assembly Diagram



Typical Rinnai Demand Duo DD5 & DD6 system installation

DD5/6 KIT Exploded Assembly Diagram



GENERAL INSTALLATION INSTRUCTIONS

Cold Water Supply

- Connect cold water pipe work to one of the cold inlets of tank, including required valves as shown in diagrams on previous page to comply to AS/NZS 3500 and local regulations. (Block unused cold port with brass plug 32 mm).
- Maximum cold water inlet pressure is 650 kPa. Fit pressure limiting valve (rated @ 700 kPa) if cold water inlet pressure is in excess of 650 kPa.
- For ease of draining, it is advisable to fit a "Tee" piece with a capped valve between the cold water isolation valve and the cold water inlet connection on the Demand Duo storage Tank. Tap provided.

Hot Water Outlet

- Connect hot water outlet pipe to 32mm fitting on upper left hand side of the storage Tank with union and isolation valve as required.
- Ensure adequate insulation / lagging is fitted to hot water pipe to minimize heat loss.

Return Pump

- A secondary or building return pump may be installed in conjunction with the Rinnai Demand Duo hot water system. Pump should be sized for minimal temperature loss around the ringmain. Pump must have a check valve on the discharge.
- Return line from building loop is connected to the cold water supply pipe after the check valve. From that point onwards the cold pipe should be insulated.

Gas Supply

- Check gas type of Rinnai INFINITY matches gas supply available (LPG or Natural) on job site.
- Gas inlet connection is located at the front bottom of the weather shroud on a DD1 and is the top pipe on a DD2 - DD6 manifold.
- Appropriate gas isolation valve to be fitted to DD1, DD2 - DD6 have gas isolation valves per water heater.
- Ensure gas pipe sizing is adequate to deliver the required volume / pressure. Pipe size used on inlet fitting is no indication of pipe size required.
- Refer to appropriate pipe sizing chart in Appendix "F" AS/NZS 5601 for appropriate sized gas pipe that should be used to ensure adequate gas supply.
- Gas meter / LPG cylinder & regulator should also be of a suitable size to ensure sufficient gas supply to the gas installation.
- Purge gas pipe to ensure removal of debris etc prior to final connection.
- Check for gas escapes using suitable methods as listed in Appendix "E" AS/NZS 5601.

Filling Instructions

Do not turn on pump / gas booster before cylinder and water heater are completely full of water.

- Flush cold water inlet pipe to remove any debris before final connection to cold water inlet on Rinnai Demand Duo cylinder.
- Turn on hot water tap to allow air to be expelled while cylinder is filling with cold water.
- Slowly open cold water isolation valve on cold water supply pipe.
- Allow cylinder to fill. Turn off hot water tap once non-aerated water flows through hot water tap.
- Check all connections for water leakage. Tighten as required.
- Purge gas lines until gas is available at water heaters.
- Prime circulating pump(s) before start up by removing chrome screw and allowing water to drip out the end of the pump shaft.

Starting Instructions

- Turn all GPO's ON.
- Thermostat will initiate.
- For standard systems "75" should appear in the maintenance monitor window on the gas heater. When flow is created by primary pump. That is the outlet temperature from the water heater. It must be higher than the thermostat set point.
- Thermostat will display temperature of water in tank. When it reaches the 65°C set point the pump and therefore, water heater will stop. The display on the water heater will not be lit when not operating.

INSTALLATION HAND OVER MANUAL

Demand Duo Principle of Operation

Cold water enters the storage tank after passing through an isolation and non return valve.

A tee is fitted to the cold inlet pipe down stream from the non return valve. From this tee, one branch connects to the lower inlet of the storage tank and the other branch connects to the primary (tank circulation) pump. (Not applicable to DD1 Models). This pumps water to the inlet of the INFINITY(S) heat source. The INFINITY will only operate when this pump is running.

The heated water from the INFINITY returns to the tank at the second lowest connection point, located above the cold inlet.

Hot water leaves the tank from the top of the tank. This may be circulated around the building and returned, via a ringmain pump (set) to the cold inlet before the tee as described above.

When there is a hot water draw off, cold water enters the tank and pushes the hot water out of the tank towards the outlet, as per any storage hot water system.

When the temperature in the tank drops below the thermostat set point, the thermostat activates the primary pump(s). They draw water from the cold water feed to the tank, the tank itself, or a combination of both. As stated previously, this water is then heated by the INFINITY and returns to the tank heated. This process is continued until the thermostat set point is reached and the pump is switched off.

The outlet temperature setting of the INFINITY must be set at least three (3) degrees hotter than the thermostat set point. Factory settings are: INFINITY 75°C, Thermostat 65°C.

Thermostat Operation

- Thermostat to control the operation of primary pumps between storage tank and external heat source, such as HD200, HD250, HDC211.
- Circuit board is housed in a plastic box with a see through front cover. Power lead with plug, two sockets and a temperature probe on lead leave the base of the box.
- Can be set up as a DD1, where one power outlet is activated if the tank temperature drops below set point and the other is permanently active for the HD200, HD250 or HDC211 to plug into or as a DDCOMBO where one or both power outlets are activated if the tank temperature drops below set point.
- Circuit board includes a display that shows measured water temperature.
- "tt" indicates tank temperature when set point is reached.
- "P" indicates that temperature has fallen below set point (less differential) and power to primary pump(s) is activated.
- Circuit board mounted LED is lit when power outlet is active when configured to provide power to a pump. When set as power supply to HD, as a DD1, LED is not lit when power outlet is active.
- Pump load per power outlet is maximum 1000 watts. Total power supply to run both pumps simultaneously is 7.5 Amps. Confirm with pump details.
- Available temperature set points are 65°C, 70°C, 75°C, and 80°C.
- Available temperature differentials are -3°C and -5°C.
- Example: if temperature set point is 65°C and differential is -3°C pump will be switched on when temperature is below 62°C and is switched off when temperature reaches 65°C
- Start up sequence for above example will initiate then show: Low: 62, High: 65.
- This sends power to the tank mounted GPO (or direct to the primary pump on a DD1). This will start the operation of the primary pump(s).
- Ensure thermostat sensor is pushed all the way into the well in the tank.
- Check that power is available at pump or GPO if necessary.

Demand Duo Preventative Maintenance

All Items

- Inspect for damage, corrosion or water leaks.

INSTALLATION HAND OVER MANUAL

Tank

- Ensure that tank is not leaking.
- Ensure that PTR valves are not leaking. It is normal for PTR valve to operate during the heating cycle, relieving pressure as the water is expanding. The PTR Valve is rated to 850 kPa and cold inlet pressure should not exceed 500-700 kPa. If it does, then a pressure reduction valve should be fitted to the cold water inlet.
- Valve may be operating if water temperature in tank is close to 99°C. If this is the case the thermostat or other heating equipment has failed to operate correctly. Contact Rinnai service department.
- If pressure and temperature are low but valve is leaking, pull the lever for up to 30 seconds, as some foreign material may be jammed in the valve seat. If valve fails to seat correctly, valve should be replaced. PTR Valves are a non-repairable safety device and should be replaced with the correct model and pressure rating.

Primary Pump

- DD1 = Grundfos UPS20-60B set to speed 3
- DD1C = Grundfos UPS25-80B set to speed 3
- DD2,3,4 = Grundfos UP 25-80B
- DD2,3,4C = Grundfos UP32-100
- DD5,6 = 2 x Grundfos UP25-80B
- DD5, 6C = 2 x Grundfos UP32-100
- DD1 wired directly to thermostat, DD2,3,4 plugs into switched GPO on tank, DD5,6 two pumps plugged into double switched GPO in tank.
- Some projects may have larger and/or dual pumps for redundancy or long primary pipe run situations.
- Pump(s) operate when activated by thermostat, as indicated by green light on thermostat.
- Ensure that pumps are installed in a weather proof location or protected from being subjected to water ingress. By themselves they are not. Wet pump electric's may cause failure. Water can run along power lead so keep the lead looping under the pump and curving upwards toward the electrical box.
- Ensure shaft is horizontal. **DO NOT** aim shaft upwards or downwards.
- **DO NOT** locate terminal box under pump housing. Position it on top preferable or on side
- **Bleed pump with chrome screw at end of pump casing.** This will be facing towards you when the pump shaft is horizontal. Pump runs on water bearing and is critical for life of pump. Excessive noise indicates damage or lack of bleed.
- When this screw is removed the spinning / stationary impeller shaft can be inspected.
- Ensure pump direction of flow arrow is towards INFINITY(S).
- If shaft is spinning but there is no flow: Check ball valves and any non return valve for correct installation and operation. UP25-80B and UP32-100 pumps have inbuilt ball valves in the unions. Line up screwdriver slot parallel to pipe to position them open.

INFINITY Heat Source

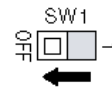
- Ensure that filter at water inlet is clean. **NOTE: that this is an 'O' ring seal and does not need to be excessively tightened. Just make sure 'O' ring is engaged inside machined surface in brass housing. Isolate water supply to DD before removing filter for cleaning and inspection. Ensure water in storage cylinder is not excessively hot before removing INFINITY inlet filter.**
- Ensure all INFINITY's are operating. Ensure power is available to INFINITY if it is not operating. Can check GPO. DD1 is hard wired to junction box. DD2 - DD6: ensure power is available to the INFINITY before applying power to thermostat and pump(s).
- Many new jobs or ones where the gas supply has been modified need to purge the gas supply lines as they are full of air. Purge should be carried in accordance with AS/NZS 5601, Appendix 'D'.

INSTALLATION HAND OVER MANUAL

- All models up to late 2006: Look at flame through inspection window for conical shape, blue base and yellow tip. Flame height will vary if heater is modulating. Inspection window is located in front cover of appliance.
- All new HD models: when operating the number displayed should be higher than the temperature setting on the tank mounted thermostat.
 - Eg Tank = 65°C, INFINITY = 75°C. These are factory standard settings.
 - Eg Tank = 80°C, INFINITY = 85°C. These are the maximum allowable settings.
- All new HD models will display a fault number if one has occurred. Below is a full list of fault codes.
- In jobs that operate for long hours and/or in dusty or smoky environments the combustion air fan may become dirty. This may be indicated by fault 10. Contact Rinnai Service.
- Internal heaters may operate for a short period of time and then stop. This can be caused by the flueing not being pushed together properly and exhaust gases are re-entering the inlet air. Push the flue together to remedy this. Also inspect flue terminal for any cause to divert exhaust air back into the inlet air. Ensure flue is terminated correctly in accordance with AS/NZS 5601.

For Internal (FFU) models only

- Have you used only RINNAI FFU flueing components?
- If flue length exceeds 2m, dip-switch 1 of SW1 is to be switched to the 'OFF' position as shown.



Your Rinnai Continuous Flow water heaters has a self diagnostic capability. If a fault occurs, an Error Code will flash on the Digital Monitor. If you have Temperature Controllers. This assists with diagnosing the fault, and may enable you to overcome a problem without a service call. Please quote the code displayed when enquiring about service.

INFINITY Fault Codes

ERROR	FAULT	REMEDY
-	Noticeable reduction in water flow.	Inlet water filter needs to be cleaned, clean filter / Service call.
03	Power interruption during Bath fill (Water will not flow on power reinstatement).	Turn off all hot water taps. Press ON/OFF twice.
10	Air intake or flue blocked	Service Call.
11	No ignition / No gas supply	Check gas is turned on at water heater and gas meter or cylinder.
12	Flame Failure / Low gas flow	Check gas is turned on at water heater and gas meter or cylinder. Check that nothing is obstructing flue outlet. Turn on gas supply to water heater.
14	Remaining Flame Safety Device	Service Call.
16	Over Temperature Warning	Service Call.
32	Outgoing Water Temperature Sensor Faulty	Service Call.
33	Heat Exchanger Outlet Sensor Faulty	Service Call.
34	Combustion Air Temperature Sensor Faulty	Service Call.
52	Gas Modulating Valve Faulty	Service Call.
61	Combustion Fan Failure	Service Call.
65	Water Flow Control Faulty (Does not stop flow properly)	Service Call.
71 & 72	Micro-processor Failure	Service Call.
LC	Line calcification	Service Call.

In all cases, you may be able to clear the Error Code simply by turning the hot water tap OFF, then ON again. If this does not clear the Error Code, try pushing the ON/OFF button OFF, then ON again. If the Error Code still remains, contact Rinnai for advice.

INSTALLATION HAND OVER MANUAL

Ringmain Pump

- These are used for circulating water around the building. They are normally left on or may have a time clock to switch it off at night when the building is not in use.
- These pumps do not pressurise the system.
- They must have a non return valve.
 - Swing non return valves must be horizontal or upward as they rely on gravity to close the valve.
 - Spring check valves can be located on any plane but may contribute excessive back pressure and restrict the pump flow rate.
- Return water should only be slightly cooler than water leaving the tank. If the temperature drop around the circuit is too high it may indicate that the ring main pump flow rate is not high enough and indicates a design fault or a blockage in the pipework (or poor pipework insulation). Investigate valves and operation of pump (same procedure as primary pump).

Service

Rinnai recommend that all commercial water heater installations have a service arrangement. Annual services are recommended at a minimum. Refer to the back cover for contact information.

INTENTIONALLY BLANK

INTENTIONALLY BLANK

Rinnai

Rinnai Australia Pty. Ltd. ABN 74 005 138 769

Head Office

100 Atlantic Drive,
Keysborough, Victoria 3173
P.O. Box 460
Braeside, Victoria 3195
Tel: (03) 9271 6625
Fax: (03) 9271 6622

Rinnai has a Service and Spare Parts network with personnel who are fully trained and equipped to give the best service on your Rinnai appliance. If your appliance requires a service, please call our National Help Line. Rinnai recommends that this appliance be serviced every 3 years.

Internet: www.rinnai.com.au E-mail: enquiry@rinnai.com.au

National Help Line

Tel: 1300 555 545*

Fax: 1300 555 655*

**Cost of a local call Higher from mobile or public phones.*

BARCODE

123 45678 90123 4

15401029