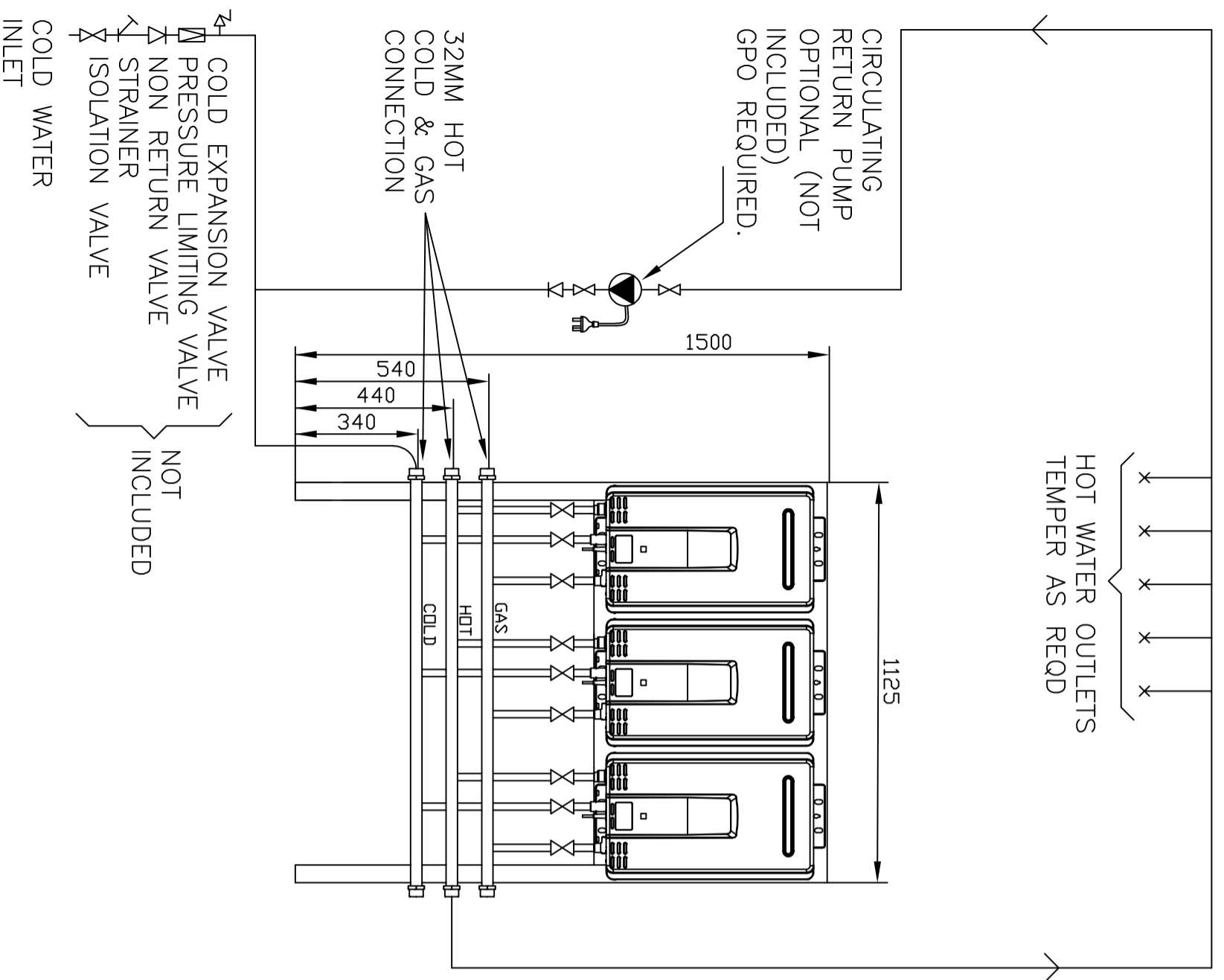


ELEVATION VIEW



HOT WATER OUTLETS
TEMPER AS REQD

CIRCULATING
RETURN PUMP
OPTIONAL (NOT
INCLUDED)
GPO REQUIRED.

32MM HOT
COLD & GAS
CONNECTION

COLD EXPANSION VALVE
PRESSURE LIMITING VALVE
NON RETURN VALVE
STRAINER
ISOLATION VALVE
COLD WATER
INLET

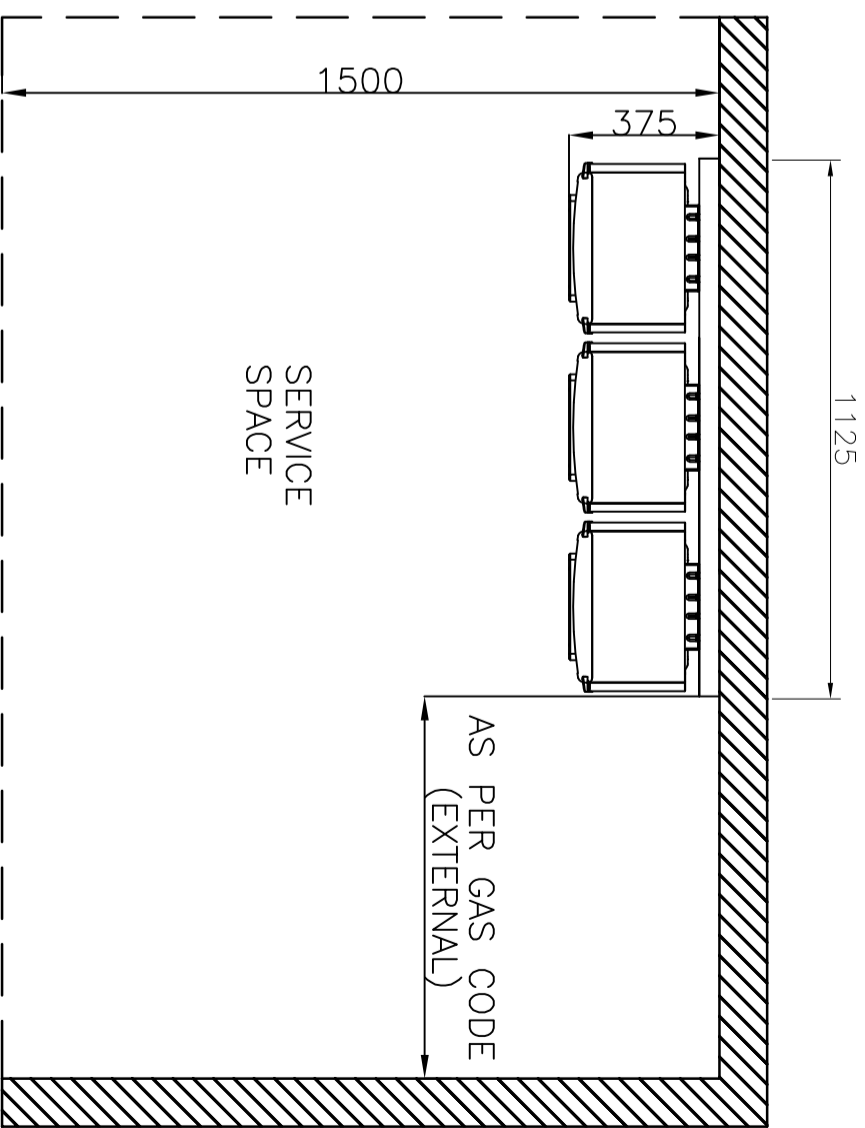
NOT
INCLUDED

DRAWING CHANGES

| REV | ECN NO | DESCRIPTION | BY | CKD | DATE |
|-----|--------|-------------|----|-----|------|
| | | | | | |

| Specifications | |
|--|-------------------|
| Heater | HD28 External |
| Gas load heater NG | 1.13 -2.75 kpa |
| Gas load heater LPG | 2.75 kpa |
| System Gas Load | 630 mJ |
| System Dry Weight | 90kg |
| Power Supply Heaters | 3 x Ext GPO 10Amp |
| Manifold Connections | 32mm |
| Thermostat Factory set | 75°C (°) |
| (°) Various temps & functions via switches | |

PLAN VIEW



SERVICE
SPACE

AS PER GAS CODE
(EXTERNAL)

| | |
|--|---|
| <p>MATERIAL</p> <p>TOLERANCE -UNLESS STATED</p> <p>0. ±1.0 0.00 ±0.1</p> <p>0.0 ±0.5 Angular ±1°</p> | <p>DIMENSIONS ARE IN MILLIMETERS AS 1:100</p> <p>THIRD ANGLE PROJECTION</p> |
| <p>DATE</p> <p>CHECKED</p> <p>APPROVED</p> | <p>DATE</p> <p>13/01/22</p> <p>SVL</p> |
| <p>DRAWN</p> <p>RMP</p> | <p>Title</p> <p>Rinnai Australia Pty Ltd</p> <p>MP328EMN MANIFOLD PACK</p> |
| <p>FINISH:</p> <p>DO NOT SCALE DRAWING</p> | <p>Weight</p> <p>SEE NOTES</p> <p>Drawing Number(PART NO)</p> <p>SK 0284</p> |
| <p>Revision</p> <p>1</p> | <p>Revision</p> <p>1</p> |