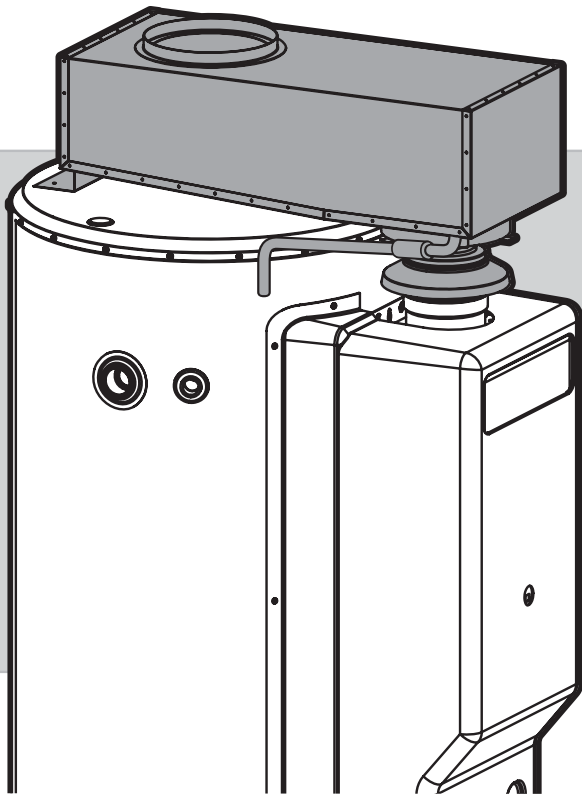


Rinnai

COMMERCIAL & COMMON FLUE SYSTEM DD1 Flue Adaptor INSTALLATION INSTRUCTIONS



For Use With Rinnai DD1
Commercial Water Heaters
& Commercial / Common
Flue Components

This appliance shall be installed in accordance with:

- Rinnai Commercial Common Flue System, Operating and Installation Manual (supplied separately)
- Manufacturer's Installation Instructions
- Current AS/NZS 3000, AS/NZS 3500 & AS/NZS 5601
- Local Regulations and Municipal Building Codes including local OH&S requirements

This appliance must be installed, maintained and removed by an Authorised Person.

For continued safety of this appliance it must be installed operated and maintained in accordance with the manufacturers instructions.



The Australian
Gas Association
All Rinnai gas products
are A.G.A. certified.

Assembly & Installation

REGULATIONS

This appliance must be installed in accordance with:

- Rinnai Commercial Common Flue System, Operating and Installation Manual (supplied separately)
- Current AS/NZS 3000, AS/NZS 3500 and AS/NZS 5601
- Rinnai Installation Instructions
- Local regulations and municipal building codes including local OH&S requirements

Installation, Service and Removal **MUST BE** by an **Authorised Person only**.

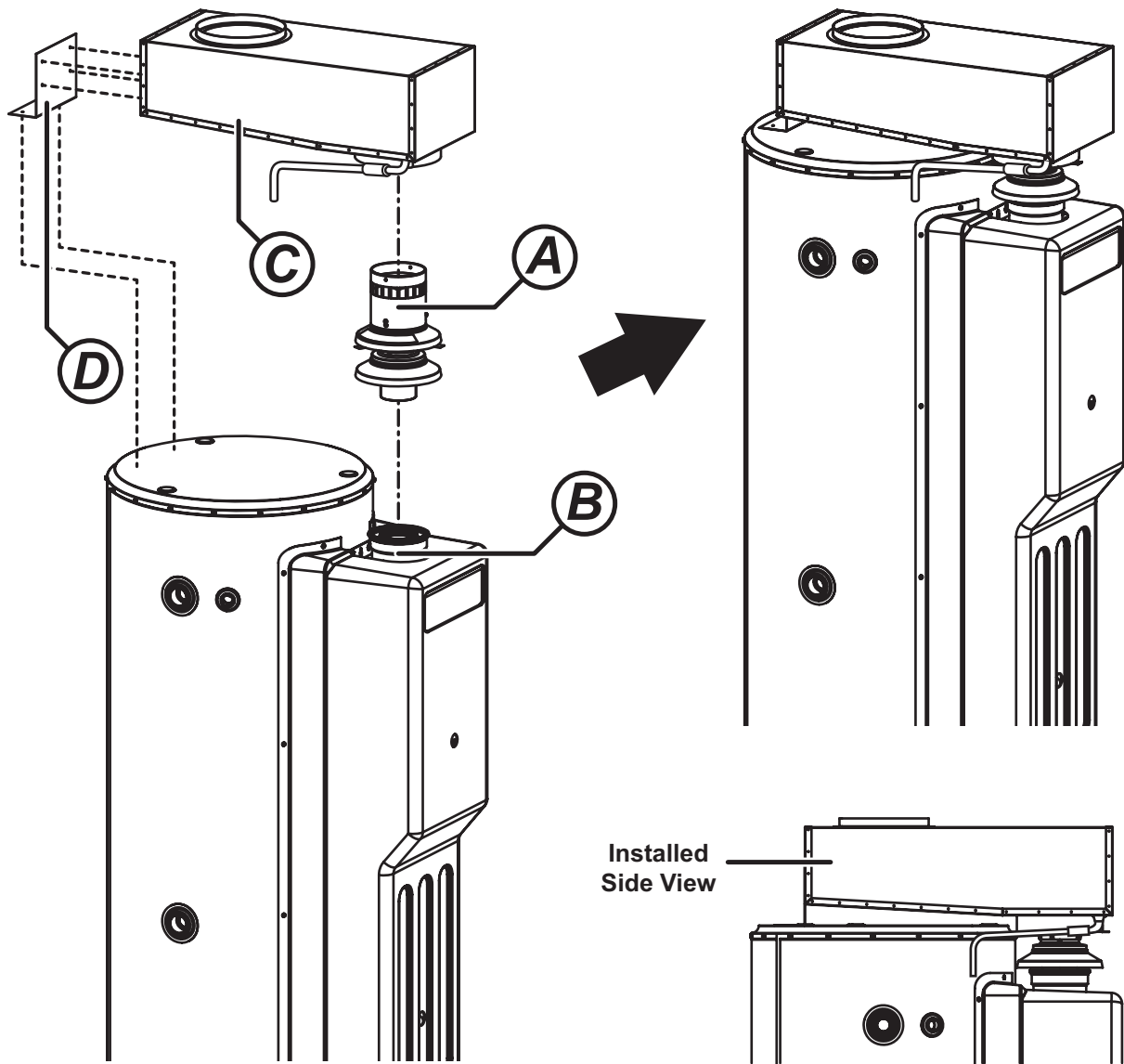
BEFORE ASSEMBLY

Review and understand the content of the "Rinnai Commercial Common Flue System, Operating and Installation Manual" as it contains important information to ensure safe and reliable operation of the appliance and flue system.

FLUE ADAPTER ASSEMBLY

Step 1. Fit Flue Insert Terminal (DDINSTERM) **A**. into the flue terminal spigot of the water heater **B**.

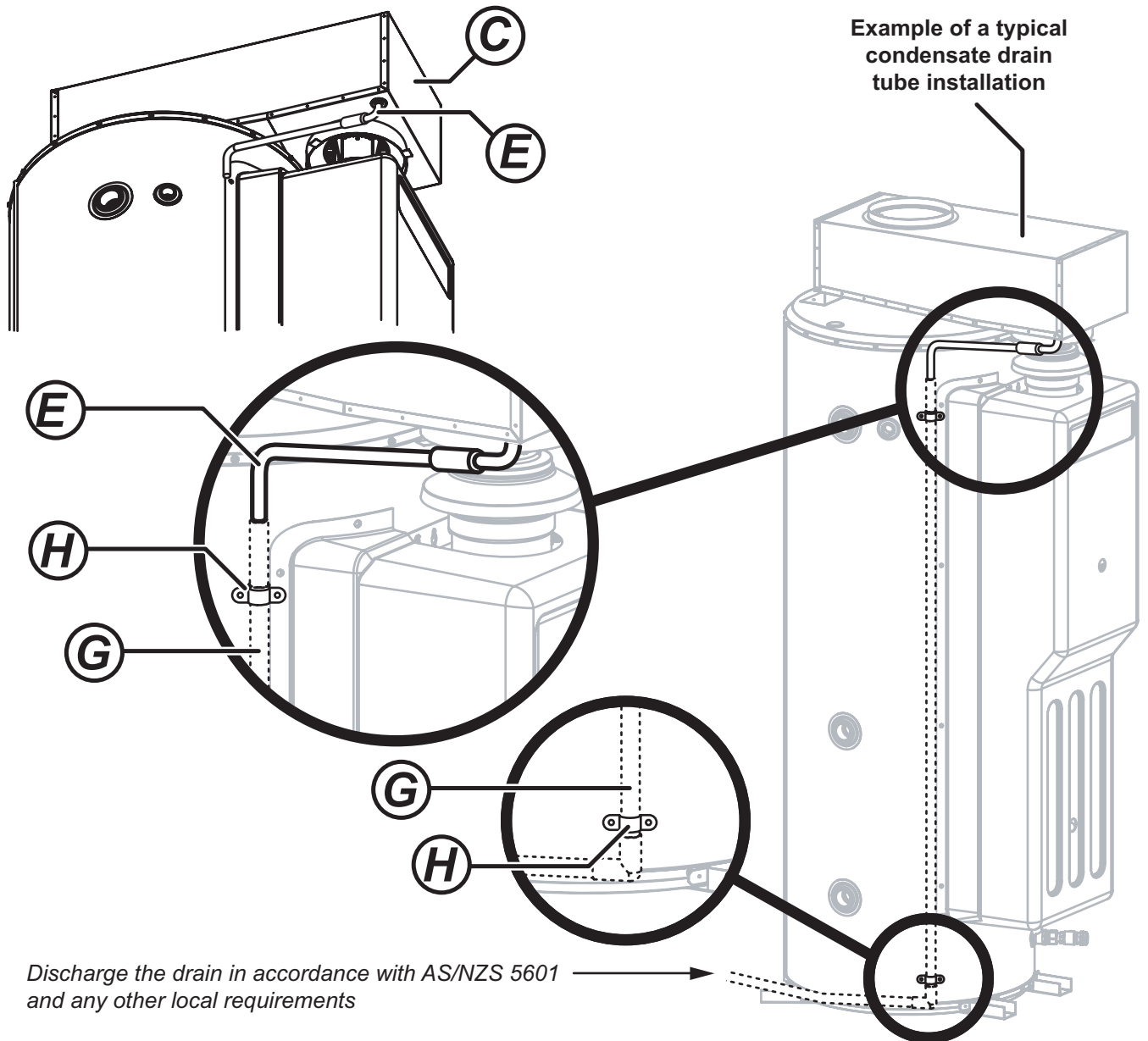
Step 2. Fit adaptor box **C**. and bracket **D**. and screw into place as shown with screws provided.



Assembly & Installation

CONDENSATE DRAIN ASSEMBLY

- Step 1. Rinnai supplies a condensate tube **E** that is pre-installed under the lower left front of the adaptor box **C**.
- Step 2. Installer is to provide, install and fix condensate drain components **G** and **H** to the condensate tube **E** in accordance with AS/NZS 5601.



Rinnai

Rinnai Australia Pty. Ltd. ABN 74 005 138 769

Head Office

10-11 Walker Street,
Braeside, Victoria 3195
P.O. Box 460
Tel: (03) 9271 6625
Fax: (03) 9271 6622

Rinnai has a Service and Spare Parts network with personnel who are fully trained and equipped to give the best service on your Rinnai appliance. If your appliance requires service, please call our National Help Line. Rinnai recommends that this appliance be serviced every 3 years.

Internet: www.rinnai.com.au E-mail: enquiry@rinnai.com.au

National Help Lines

Customer Care Centre
Tel: 1300 555 545* Fax: 1300 555 655*

**Cost of a local call higher from mobile or public phones.*
Hot Water Service Line
Tel: 1800 000 340