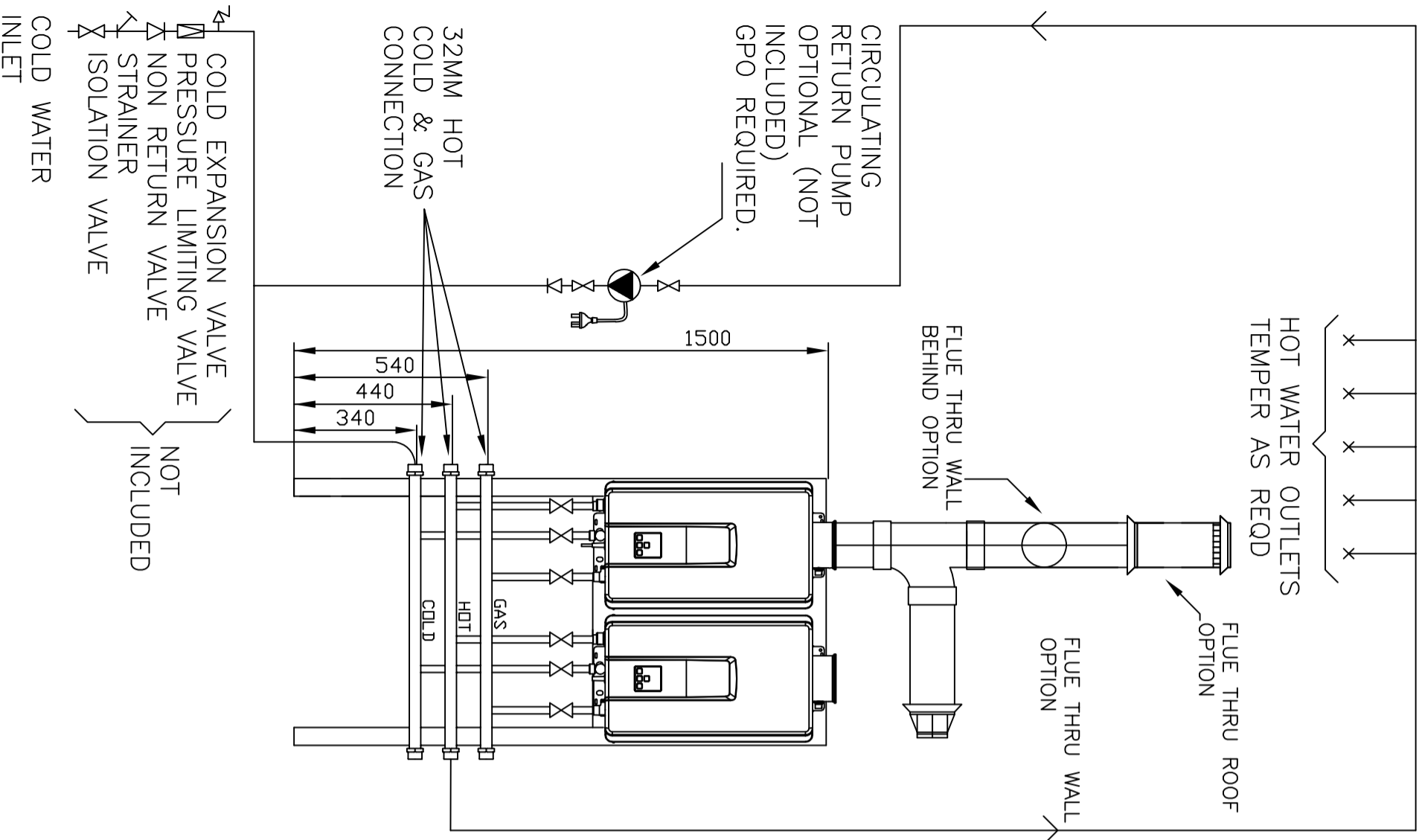


ELEVATION VIEW



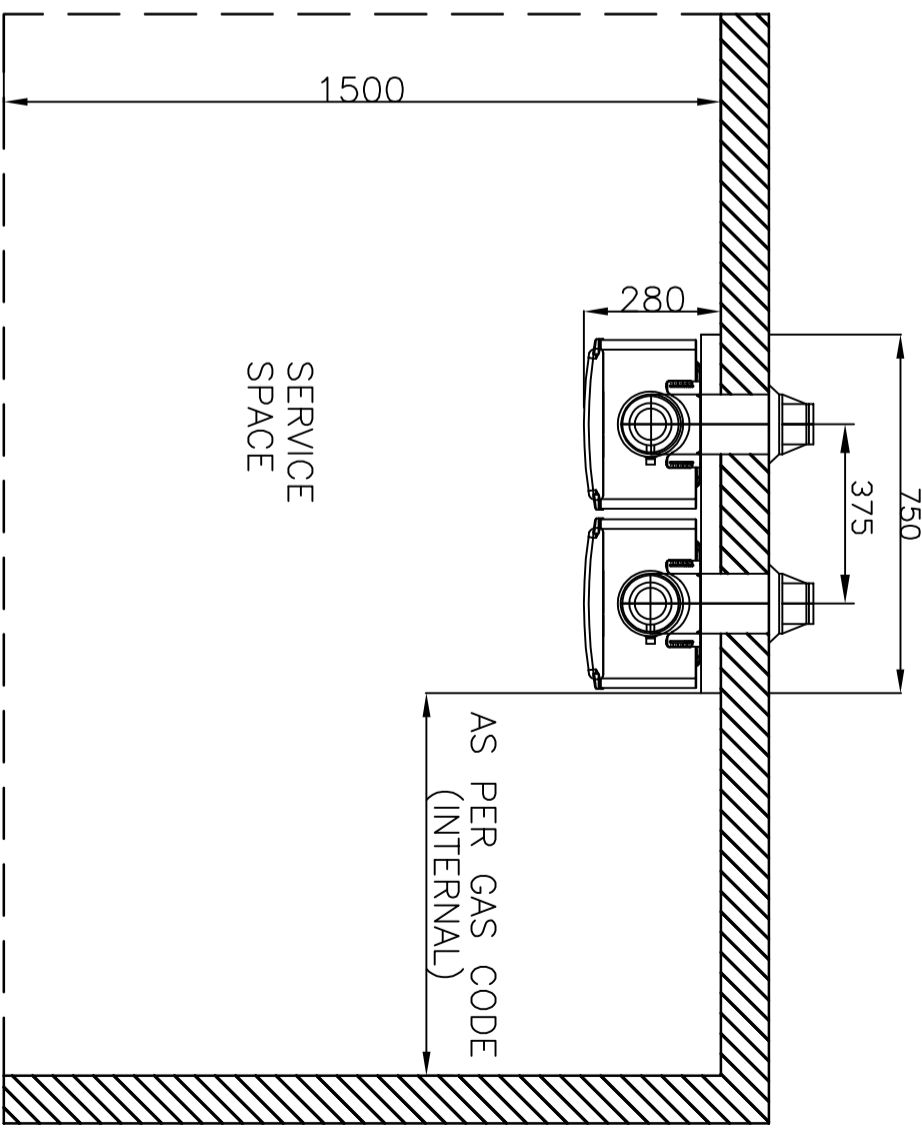
DRAWING CHANGES

REV	ECN NO	DESCRIPTION	BY	CKD	DATE

Specifications

Heater	HD28 Internal
Gas load heater NG	1.13 -2.75 kpa
Gas load heater LPG	2.75 kpa
System Gas Load	420 mJ
System Dry Weight	60kg
Power Supply Heaters	2 x GPO 10Amp
Manifold Connections	32mm
Thermostat Factory set	75°C (*)
Fan Assisted Balanced Flue	
(*) Various temps & functions via switches	

PLAN VIEW



MATERIAL

TOLERANCE -UNLESS STATED

0. ±1.0
0.0 ±0.5

0.00 ±0.1
Angular ±1°

FINISH:

DIMENSIONS ARE IN MILLIMETERS AS 1:100



DO NOT SCALE DRAWING

DATE	CHECKED	APPROVED
18/01/22	SVL	

Rinnai Australia Pty Ltd

MP2281MN MANIFOLD PACK

SEE NOTES

Drawing Number(PART NO)
SK 0288

Revision
1